



**STANDARD EQUIPMENT**

- ▶ 55 A alternator
- ▶ Air cleaner, dry type with dust indicator
- ▶ Autodecel Function
- ▶ Automatic deaeration system for fuel line
- ▶ All-weather steel cab (with tinted safety glass windows, pull-up type front window with lock device, removable lower windshield, lockable door, floor mat, adjustable seat)
- ▶ Blade (2.26 m wide)
- ▶ Cooling fan
- ▶ Counterweight 680 kg (1500 lb)
- ▶ Control levers (wrist control, adjustable)
- ▶ Drive system: hydrostatic, high-low travel system
- ▶ Electric horn
- ▶ Front light (1)
- ▶ Fuel control lever
- ▶ Heavy duty 95 Ah Battery
- ▶ Rear view mirror (RH)
- ▶ Radiator and oil cooler with dust proof net
- ▶ Revolving frame underguards
- ▶ Seat, adjustable
- ▶ Starting motor, 24-volt direct electric
- ▶ Track frames: 5-track/1-carrier roller (each side), 450 mm 18" triple-grouser shoes and hydraulic track adjusters
- ▶ Track roller guard
- ▶ Tool kit
- ▶ Vandalism protection locks
- ▶ Wiper Motor



**OPTIONAL**

- ▶ Air Prefilter
- ▶ Bucket Options:
  - Trenching Bucket 0.09 m<sup>3</sup>
  - GP Bucket 0.35 m<sup>3</sup>
  - GP & HD Bucket 0.30 m<sup>3</sup>
- ▶ Cold start kit
- ▶ Front Cab Guard
- ▶ Lifting arrangement of machines
- ▶ Rock breaker
- ▶ Rock breaker Adaptation kit
- ▶ Tunnelling configuration

# KOMATSU®

## PC71

**PC  
71**

**HORSEPOWER**  
44.1 kW 60 HP @ 1900 rpm

**OPERATING WEIGHT**  
7050 kg

**BUCKET CAPACITY**  
0.09 - 0.35 m<sup>3</sup>

www.Komatsu.com

11.2017

**KOMATSU®**



Marketed & Serviced by:

**L&T Construction Equipment**

**Larsen & Toubro Limited**

1<sup>st</sup> Floor Lakshminarayan Complex, 10/1 Palace Road, Bengaluru- 560 052  
Tel: (080) 22256982/83/84, 40401700 Fax: (080) 22250309  
E-mail: ceb@larsentoubro.com www.larsentoubro.com

**Zonal Offices:**

**Delhi** (011) 4141 9555/59  
**Nagpur** (0712) 6606441/2260025

**Kolkata** (033) 44002433/22831442  
**Hyderabad** (040) 23230206/67015064

**Pune** (020) 66033483/480  
**Chennai** (044) 22706865/22706850

CIN: L99999MH1946PLC004768

Materials and specifications are subject to change without notice.  
**KOMATSU** is a trademark of Komatsu Ltd. Japan.



Photos may include optional equipment.

**WALK-AROUND**

**HydraMind hydraulic System**

HydraMind is an advanced hydraulic control system that provides the operator with unbeatable feel and precision control. By automatically providing just the right combination of speed and power, even the most complex operations can be tackled with maximum speed and efficiency. This makes the excavator work better in any jobsite.

**KOMTRAX**

**Information and Communication Technology**

KOMTRAX™ website to optimise your maintenance planning and fleet management

See page 7



**Comfortable Operating Environment**

Spacious Cabin ensures better visibility, easy access to Control levers  
See page 7

**New Hybrid Filter Element**

The new hybrid filter element with extended replacement interval of 500 hrs, improves filtering and enhances oil life to 5000 hrs.  
See page 7

**Reinforced Structures**

Stronger & sturdier Boom, Bucket and Arm with cast end for high durability  
See page 6

**Ecology & Economy Features**

- Low fuel consumption
- Selectable working modes
- Auto decelerator to minimize fuel consumption
- Closed-centre load sensing system (CLSS)

**Heavy duty Dozer Blade**

Powerful dozer blade with high drawbar pull  
See page 6

**Resin Exterior Hood**

All exterior surfaces of the engine hood are processed with resin to reduce weight and noise.  
See page 7

<b>HORSEPOWER</b>	44.1 kW 60 HP @ 1900 rpm
<b>OPERATING WEIGHT</b>	7050 kg
<b>BUCKET CAPACITY</b>	0.09 - 0.35 m <sup>3</sup>

## ADVANCED HYDRAULIC SYSTEM

The PC71 is equipped with HydrauMind, Komatsu's unique hydraulic system

### What is HydrauMind?

HydrauMind system is one of the most sophisticated yet mechanically simple hydraulic systems currently available.

HydrauMind is not computer-dependent, as it is essentially hydraulic not electronic. Its strength lies in its simplicity.

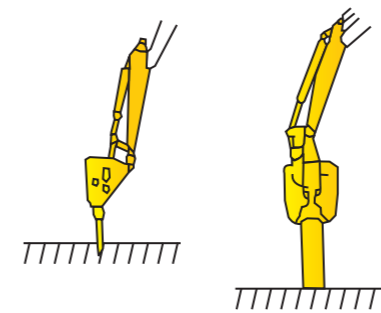
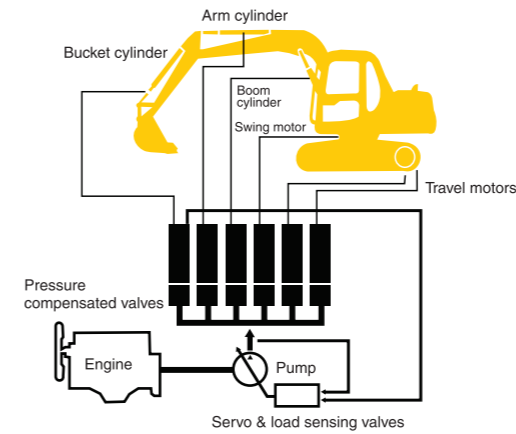
The system incorporates many major breakthroughs and has earned Komatsu almost 200 patents.

### Benefits of HydrauMind

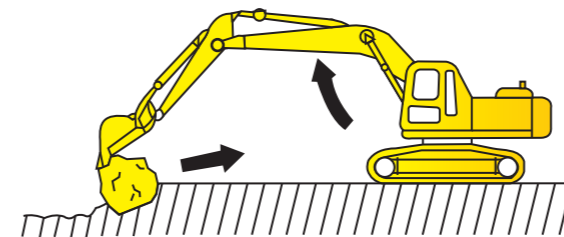
Power, versatility, manoeuvrability, controllability - you name it. Never has an excavator been so easy to operate, so natural, so intuitive. In a sense, you don't really operate it at all, you wear it.

For example, when the ground condition changes in digging, you don't have to think about changing your lever strokes because the HydrauMind instantly, silently, automatically sends just the right amount of oil to the actuators at just the right pressure to accommodate the change.

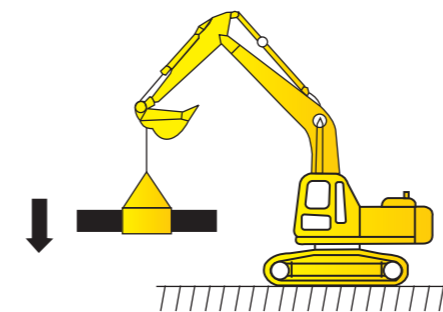
When you move the boom, arm and bucket at the same time, all the equipment works together with the optimum combination of speed and power - as if it were a human hand.



The modular design concept of HydrauMind makes it easy to add additional hydraulic circuits.

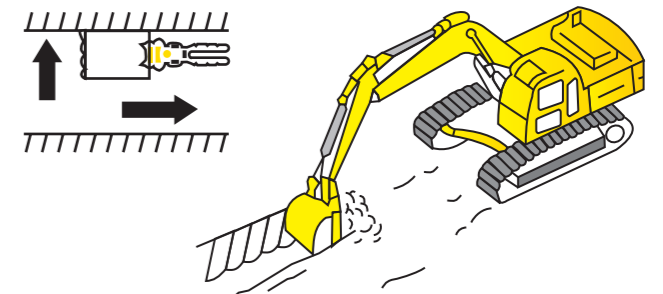


Working through soft rock or pulling up boulders is easy because the system precisely controls boom raise, preventing the cutting edge from slipping.

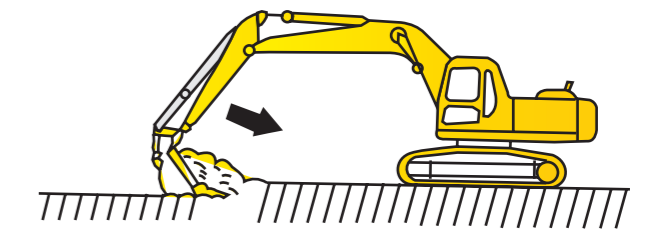


Fine-control lifting is easy because the system keeps lever control steady, no matter, how heavy the load because the system keeps work equipment speed steady.

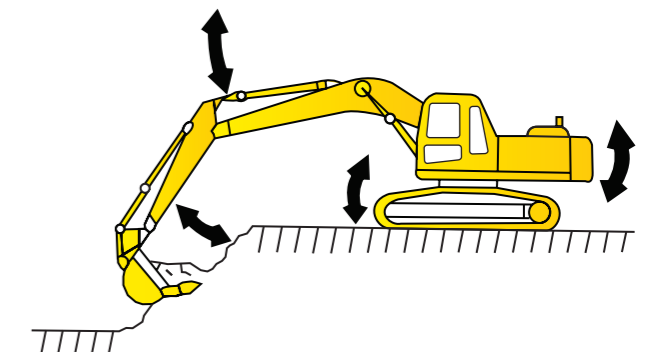
In the HydrauMind system, the load-sensing valves and pressure-compensated valves automatically handle all adjustments for individual jobs based on the pressure and the lever stroke detected.



Digging along ditch walls is easy because the system delivers such powerful bucket side force, obtained from swing force.



Full loading of buckets is easy, because during simultaneous operations, the work equipment can move slowly and precisely under maximum power.



Chassis-shake is reduced during simultaneous operations because the work load causes no change in the work equipment speed.

**COMFORT**



**Suspension Seat**

The suspension seat adjusts the height, based on the weight of the operator, making it convenient and comfortable to operate and improving overall productivity. Operators will find the seat suiting their physique.

**Adjustable Seat & Control Levers**

The seat slides forward and backward with the control levers to ensure best operating position at all times. The operator will have ample legroom depending on his frame.

**Reliable structures**

The rugged Boom & Arm are designed and built using the latest in technology. The cast-end boom top & mounts and reinforced arm have proven endurance in the most demanding applications.

**Tough Undercarriage**

The PC71 is fitted with an original Komatsu design track assembly featuring track guiding guards that prevent the track chain from slipping off the track rollers. Idler guards ensure smooth riding of tracks over the idler.

**Durable Engine**

The PC71 is powered by the fuel-efficient and easy-to-maintain KOEL4R 1040 industrial engine. This engine, coupled with Komatsu's revolutionary hydraulics offers unmatched productivity.

**Heavy Duty Dozer Blade**

The heavy duty dozer blade has high drawbar pull and provides excellent dozing capability for various applications such as back-filling, levelling etc.

**Other Features**

Double lock electric connectors prevent loose connections due to vibrations.



**EASY MAINTENANCE**

**Extended Maintenance Intervals**

The advanced HydraMind system ensures hydraulic oil properties are maintained longer than in conventional systems. This enhances the replacement interval of oil & filters, without the necessity of any special oils. The hydraulic system also eliminates the need of some consumables & components that are required in conventional systems.

**Fully-opening engine hood**

The engine hood opens fully, making daily service checks easier, standing on the ground.

**Easy bucket replacement**

The snap-ring type bucket pin fixture makes it simple to replace the bucket - just a single screwdriver is needed.

**Battery**

Easy access is provided for maintenance and serviceability of the heavy duty 95 Ah battery.



**ICT & KOMTRAX**

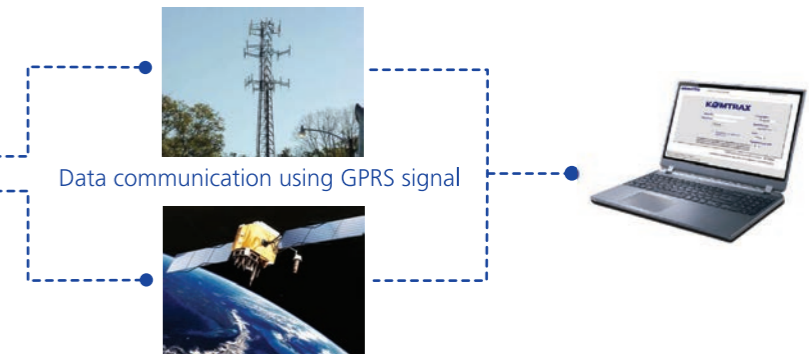


KOMTRAX™ is a revolutionary machine tracking system designed to save your time and money. You can now monitor your equipment anytime and anywhere. Use valuable machine data received via the KOMTRAX™ website to optimise your maintenance planning and fleet management.

**KOMTRAX™ assists you with:**

- **Full machine monitoring**  
Get detailed operation data to know when your machines are used
- **Total fleet management**  
Keep track of the location of your machines at all times and discourage unauthorized usage
- **Easy access to machine information**  
Machine working details can be easily obtained from anywhere using internet facility

**Monitor your machine from anywhere, anytime for complete peace of mind!**



**Summary – Location / SMR / Working**

Summary - Location/SMR/Working

**Working hour record**

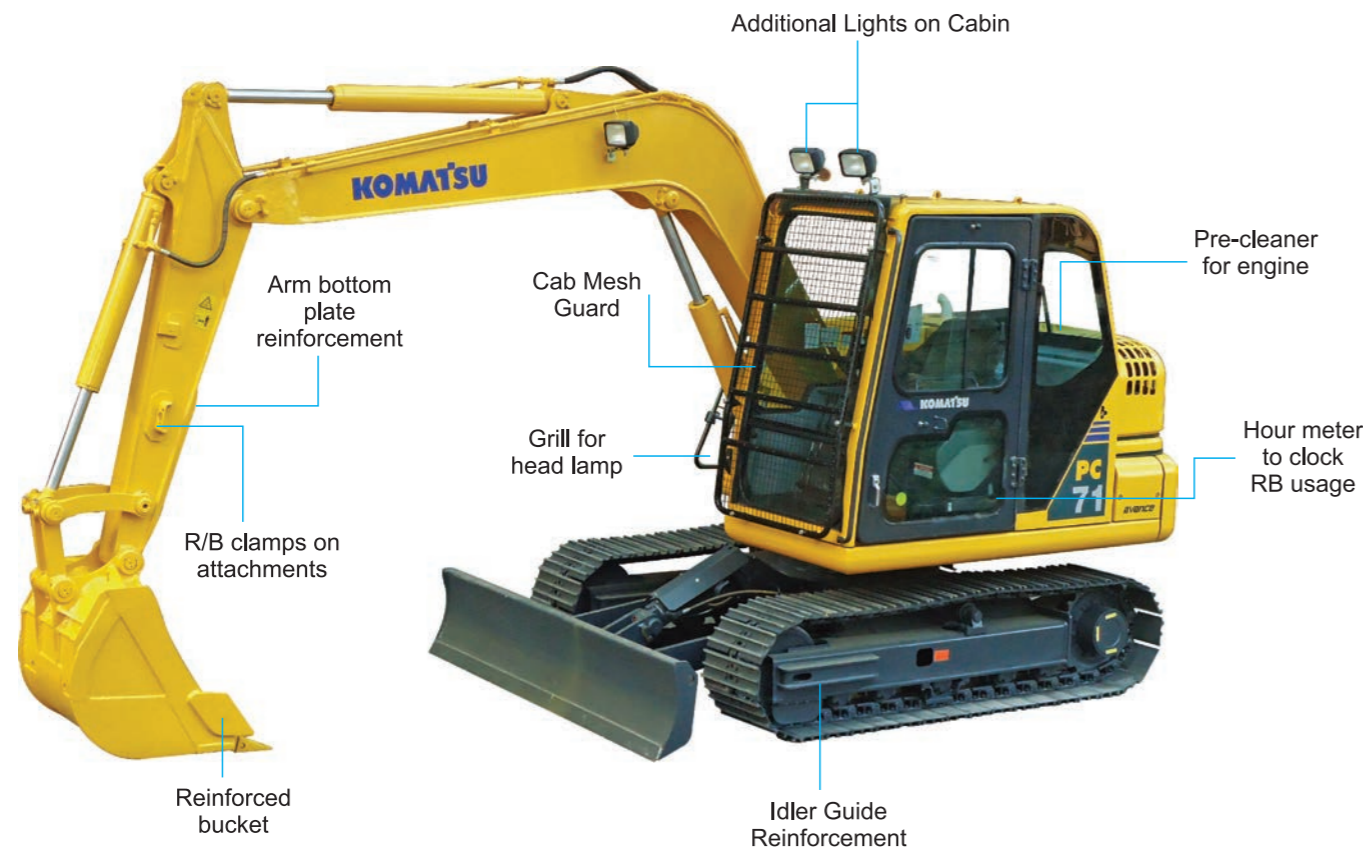
**Machine location record**

No.	Event	Event Time	GPS Time	LAT.	LOC.
1	Daily Data	04-16-2015 01:34:23	04-16-2015 01:34:23	N11 20 17.223	E76 18 41.352
2	Daily Data	04-15-2015 01:33:23	04-15-2015 01:33:23	N11 20 18.30	E76 18 41.352
3	Daily Data	04-14-2015 01:36:23	04-14-2015 01:36:23	N11 20 17.253	E76 18 41.352
4	Daily Data	04-13-2015 01:33:23	04-13-2015 01:33:23	N11 20 18.61	E76 18 41.352
5	Daily Data	04-12-2015 01:38:23	04-12-2015 01:38:23	N11 20 18.30	E76 18 41.352

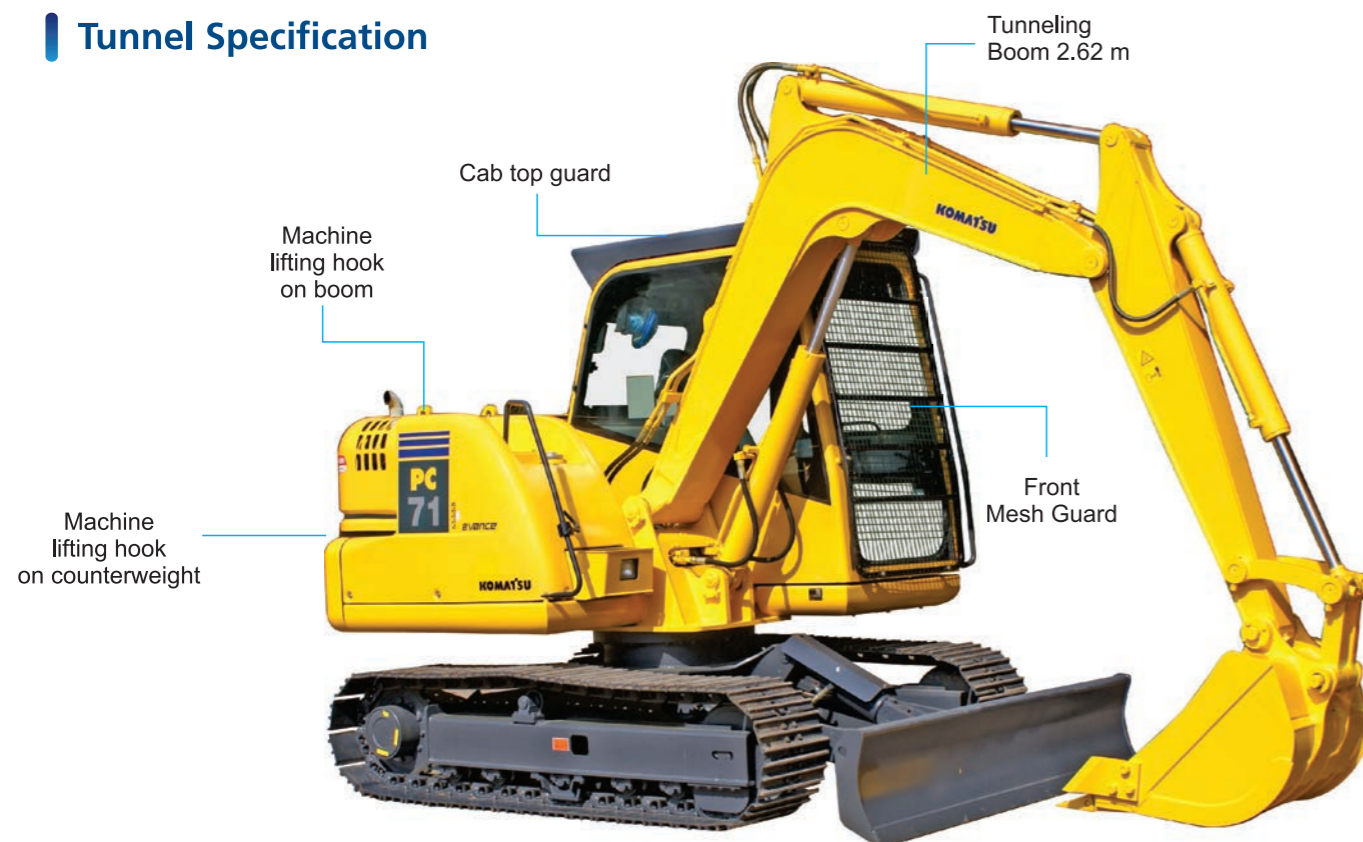
**Monthly status summary**

**SPECIAL VARIANTS**

**Quarry Specification**



**Tunnel Specification**



**SPECIFICATIONS**



**ENGINE**

Model.....KOEL 4R-1040  
 Type .....4-cycle, water-cooled, direct-injection  
 Aspiration .....Naturally aspirated  
 No. of cylinders .....4  
 Bore..... **105mm** 4.13"  
 Stroke..... **120mm** 4.72"  
 Piston displacement .....**4.16ltr** 253.63 cu in  
 Gross Power  
 (SAE J1995) .....**60 HP** 44.1 kW @ 1900 RPM  
 Net Power  
 (SAE J1349).....**54 HP** 40.3 kW @ 1900 RPM  
 Governor.....All-speed, mechanical



**HYDRAULIC SYSTEM**

Type.....**HydraMind (Hydraulic Mechanical Intelligence New Design) system**  
 Closed-centre system with load sensing valves and pressure compensated valves

Main pump:  
 Type.....Variable-displacement piston pump  
 Maximum flow.....1 x 155 ltr / min 41.0 U.S. gal/min

Hydraulic motors:  
 Travel .....2 x Axial piston motor with parking brake  
 Swing....1 x Axial piston motor with Swing holding brake

**Relief valve settings:**

Implement circuits **250 kg/cm<sup>2</sup> 3,560PSI/ 4.5 MPa**  
 Travel circuits **250 kg/cm<sup>2</sup> 3,560PSI/ 24.5 MPa**  
 Swing circuits **195 kg/cm<sup>2</sup> 2,770PSI/ 19.1 MPa**  
 Pilot circuits **30 kg/cm<sup>2</sup> 430PSI/ 2.9 MPa**  
 Service valve .....**Add-on type (optional)**

**Hydraulic cylinders:**

	number of cylinders	bore x stroke
Boom	1	<b>115 mm x 840 mm</b> 4.5" x 33.1"
Arm	1	<b>100 mm x 865 mm</b> 3.9" x 34.1"
Bucket	1	<b>90 mm x 710 mm</b> 3.5" x 28.0"

All hydraulic joints are with O-Ring face seal type (ORFS)



**SWING SYSTEM**

Driven by.....Hydrostatic motor  
 Swing reduction .....Planetary gear reduction  
 Swing circle lubrication .....Grease-bathed  
 Swing lock .....Oil disc brake  
 Swing speed.....12.0 RPM



**DRIVES & BRAKES**

Steering control.....Two levers  
 Drive method.....Fully hydrostatic type  
 Drive motor .....Axial piston motor, in-shoe design  
 Reduction system .....Eccentric differential planetary gear reduction  
 Max. drawbar pull ..... 5500 kg 12,125 lb/53.9 kN  
 Max. travel speed (High)..... **3.5 km/h** 2.2 MPH  
 Max. travel speed (Low)..... **2.3 km/h** 1.4 MPH  
 Service brake.....Hydraulic lock type  
 Parking brake .....Oil disc brake



**UNDERCARRIAGE**

Track frame .....Box section type  
 Seal of track.....Sealed track  
 Track adjuster .....Hydraulic type  
 No. of shoes .....38 each side  
 No. of carrier rollers.....1 each side  
 No. of track rollers .....5 each side



**COOLANT & LUBRICANT CAPACITY (Refill)**

Fuel tank ..... **130.0 ltr** 34.3 U.S. gal  
 Radiator..... **17.5ltrs** 4.62 U.S. gal  
 Engine..... **9.6 ltr** 2.5 U.S.gal  
 Final drive, each side ..... **1.7 ltr** 0.4 U.S. gal  
 Swing drive..... **1.5 ltr** 0.4 U.S. gal  
 Hydraulic tank ..... **57.0 ltr** 15.1 U.S.gal



**OPERATING WEIGHT (approximate)**

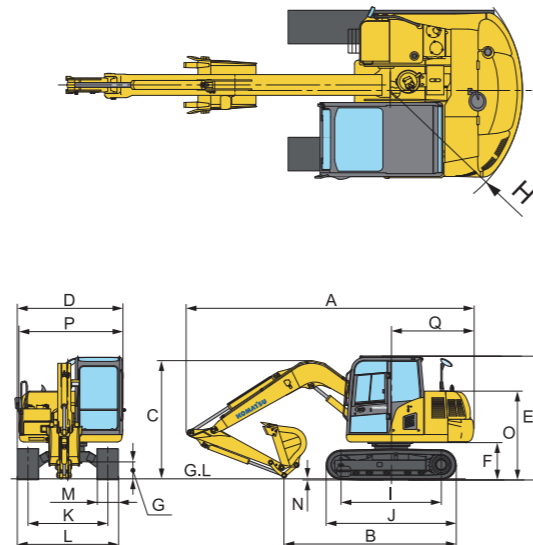
Operating weight, including 3710 mm 12'2" one-piece boom, 1650 mm 5'5" arm, SAE heaped 0.3 m<sup>3</sup> 0.4 cu.yd backhoe HD bucket, operator, lubricant, coolant and full fuel tank and the standard equipment.

Triple-Grouser Shoes	Operating Weight	Ground Pressure
450 mm	7050 kg	0.34 kg/cm <sup>2</sup>
18"	(15,510 lb)	4.82 PSI/33.2 kPa

**SPECIFICATIONS**

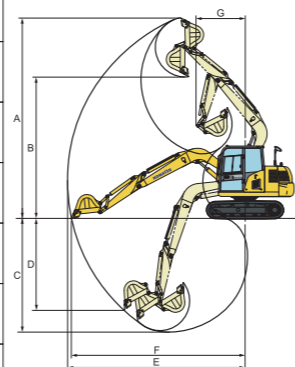
**DIMENSIONS**

	Komatsu PC71		
	1.65 m	5'5" arm	2.25 m 7'5"arm
<b>A Overall length</b>	6080 mm	19'11"	6105 mm 20'
<b>B Length on ground (transport)</b>	3645 mm	12'	3515 mm 11'6"
<b>C Overall Height (to top of boom)</b>	2500 mm	8'2"	2830 mm 9'3"
<b>D Overall width</b>	2225 mm 7'4"		
<b>E Overall height (to top of cab)</b>	2590 mm 8'6"		
<b>F Ground clearance, counterweight</b>	750 mm 2'6"		
<b>G Min. ground clearance</b>	350 mm 1'2"		
<b>H Tail swing radius</b>	1750 mm 5'9"		
<b>I Length of track on ground</b>	2130 mm 7'		
<b>J Track length</b>	2765 mm 9'1"		
<b>K Track gauge</b>	1700 mm 5'7"		
<b>L Width of crawler</b>	2150 mm 7'1"		
<b>M Shoe width</b>	450 mm 1'6"		
<b>N Grouser height</b>	20 mm 0.79"		
<b>O Machine cab height</b>	1810 mm 5'11"		
<b>P Machine cab width</b>	2180 mm 7'2"		
<b>Q Distance, swing center to rear end</b>	1750 mm 5'9"		



**WORKING RANGE**

Komatsu PC71	WITH 3.71 m BOOM		WITH 2.62 m TUNNEL BOOM
<b>Arm</b>	1.65 m 5'5" arm	2.25 m 7'5"arm	1.65 m 5'5" arm
<b>A Max. digging height</b>	7150 mm 23'6"	7515 mm 25'	5575 mm 18'4"
<b>B Max. dumping height</b>	5015 mm 16'5"	5420 mm 18'	3670 mm 12'1"
<b>C Max. digging depth</b>	4100 mm 13'5"	4690 mm 15'5"	3235 mm 10'7"
<b>D Max. vertical wall digging depth</b>	3135 mm 10' 3"	3610 mm 11' 10"	1765 mm 5'0"
<b>E Max. digging reach</b>	6360 mm 20'10"	6900 mm 23'	5040 mm 16'6"
<b>F Max. digging reach at ground level</b>	6220 mm 20'5"	6770 mm 22'4"	4860 mm 15'4"
<b>G Min. swing radius</b>	1750 mm 5'9"	2075 mm 6'8"	1975 mm 6'6"
<b>Bucket digging force</b>	4800 kg 10,580 lb/47.1 kN	4800 kg 10,580 lb/47.1 kN	4800 kg 10,580 lb/47.1 kN
<b>Arm crowd force</b>	3600 kg 7,940 lb/35.3 kN	3050 kg 6,720 lb/29.9 kN	3600 kg 6,940 lb/35.3 kN



**BUCKET OPTIONS**

Bucket capacity (heaped)		Width		Weight (with side cutter)	No. of teeth	Arm	
SAE PCSA	CECE	Without side cutters	With side cutters			1.65m 5'5"	2.25m 7'5"
0.09 m <sup>3</sup> 0.12 cu. yd	0.08 m <sup>3</sup> 0.10 cu. yd	350 mm 13.8"	450 mm 17.7"	145 kg 320 lb	3	○	○
0.30 m <sup>3</sup> (GP) 0.40 cu. yd	0.27 m <sup>3</sup> 0.36 cu. yd	790 mm 31.1"	890 mm 35.0"	236 kg 520 lb	4	○	△
0.30 m <sup>3</sup> (ROCK) 0.40 cu.yd	0.27 m <sup>3</sup> 0.36 cu.yd	—	785 mm 30.9"	267 kg 588 lb	4	○	△
0.35 m <sup>3</sup> (GP) 0.47 cu.yd	0.30 m <sup>3</sup> 0.40 cu.yd	845 mm 33.3"	950 mm 37.4"	265 kg 584 lb	4	○	△

These charts are based on over-side stability with fully loaded bucket at maximum reach. ○ General purpose use, weight up to 1.8 t/m<sup>3</sup> 1.52 U.S.ton/cu yd  
△ Material weight up to 1.2 t/m<sup>3</sup> 1.01 U.S ton/cu yd

**Tunnel Spec:**  
Boom Length 2.62m, Arm Length 1.65m & Bucket 0.35m<sup>3</sup> (SAE) for Material Density upto 1.8t/m<sup>3</sup>

**Quarry Spec:**  
Boom Length 3.71m, Arm Length 1.65m & Rock Bucket 0.3m<sup>3</sup> (SAE) for Material Density upto 1.8t/m<sup>3</sup>

**LIFTING CAPACITY**

**A** : Reach from swing center  
**B** : Bucket hook height  
**C** : lifting capacity  
**Cf** : Rating over front  
**Cs** : Rating over side  
⊖ : Rating at maximum reach

**Conditions:**  
 • 3710 mm 12' 2" one-piece boom  
 • 1650 mm 5' 5" arm  
 • 0.3 m<sup>3</sup> 0.4 cu. yd SAE heaped HD bucket  
 • 450 mm 18" triple-grouser shoes

A \ B	Max		5.5m (18')		4.5m (15')		3m (10')		1.5m (5')	
	Cf	Cs	Cf	Cs	Cf	Cs	Cf	Cs	Cf	Cs
6m (20')	*1550 3400	*1550 3400								
4.5m (15')	*1350 3000	1300 2900					*1300 2850	*1300 2850		
3m (10')	1050 2300	900 2000			1400 3100	1200 2650	*1800 3950	*1800 3950	*3150 6950	*3150 6950
1.5m (5')	950 2100	800 1750	900 2000	800 1750	1350 3000	1150 2550	*2500 5500	2200 4850		
0 (0)	950 2100	800 1750			1250 2750	1050 2300	2400 5300	2000 4400		
-1.5m (-5')	1200 2650	1000 2200			1250 2750	1050 2300	2400 5300	1950 4300	*4500 9900	*4500 9900
-3m (-10')	*1400 3100	*1400 3100					*1600 3550	*1600 3550		

\* Load is limited by hydraulic capacity rather than tipping. Ratings are based on SAE Standard No. J 1097. Rated loads do not exceed 87% of hydraulic lift capacity or 75% of tipping load.