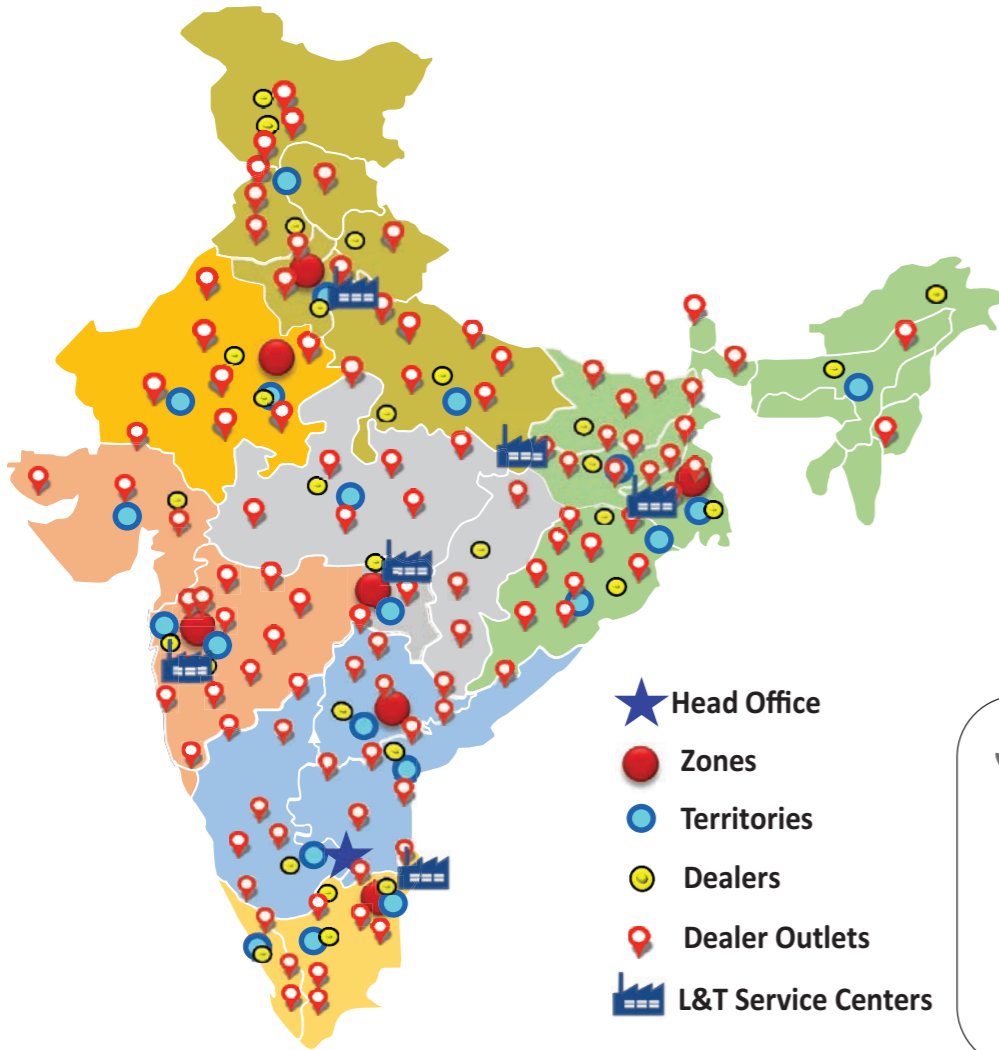




L&T CMB NATIONWIDE SALES AND AFTER SALES SUPPORT NETWORK



EQUIP-CARE
Customer Care Number
1800 833 9990

Unified program for sales & after sales support.

Product improvement is a continuous process. Specifications given in this publication are therefore subject to change without notice. Photographs depicted may be of optional equipment

www.komatsuindia.in

Printed on 05-2022

KOMATSU[®]



Marketed & Serviced by:

L&T Construction & Mining Machinery

Larsen & Toubro Limited

1st Floor Lakshminarayan Complex, 10/1 Palace Road, Bengaluru- 560 052

Tel: 080 40401700 / 900

E-mail: ceb@larsentoubro.com www.lntcmb.com

Zonal Offices:

Delhi (011) 40819500
Nagpur (0712) 6606441/2260025
Jaipur (0141) 4385900

Kolkata (033) 44002433/22831442
Hyderabad (040) 47575064

Pune (020) 48544259
Chennai (044) 40706864

CIN: L99999MH1946PLC004768

Materials and specifications are subject to change without notice.

KOMATSU is a trademark of Komatsu Ltd. Japan.

KOMATSU[®]

PC500LC-10R

HYDRAULIC EXCAVATOR



Photos may include optional equipment.

PC500LC-10R

HORSEPOWER

Gross: 270 kW 362 HP/1900 min⁻¹
Net: 269 kW 360 HP/1900 min⁻¹

OPERATING WEIGHT

49400 - 51300 kg

BUCKET CAPACITY

3.5 m³ / 3.7 m³

WALK-AROUND

Higher Returns, Peace of Mind.



PC500LC-10R

DURABILITY & RELIABILITY

- Upsized, stronger & more durable work equipment
- New design, heavy duty undercarriage
- Heavy-duty main frame and improved swing circle rigidity

INFORMATION & COMMUNICATION TECHNOLOGY (ICT) & KOMTRAX

- High resolution Large Liquid Crystal Display (LCD) monitor
- Equipment Management Monitoring System
- KOMTRAX

LOWER FUEL CONSUMPTION

- Advanced management system of variable engine speed matching control
- Viscous fan clutch system
- Reduction of hydraulic loss in pipes and tubes
- Auto idle stop function

LOWER MAINTENANCE COST

- Less maintenance time
- System to detect and prevent failure of major components
- Monitor panel displays a wide range of maintenance information for quick action

HIGHER PRODUCTIVITY

- Larger bucket capacity
- Powerful digging operation

SAFETY & COMFORT

- Large comfortable cab
- Travel Alarm
- Engine shutdown secondary switch
- Rear view monitor system (Optional)

FUEL EFFICIENCY

Upto **24%** ↑

Compared to PC450LC-8

Photos may include optional equipment.

HIGHER PRODUCTIVITY

PC500LC-10R

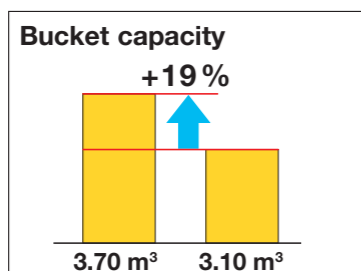


Increase Productivity

Productivity (cu.m/l) is improved by large bucket capacity and superior machine performance. It improves productivity and economical performance.

Large capacity buckets

Buckets of capacity 3.50 m³ & 3.70 m³ are available. It can be matched for different applications.

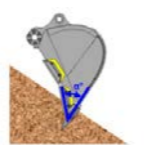
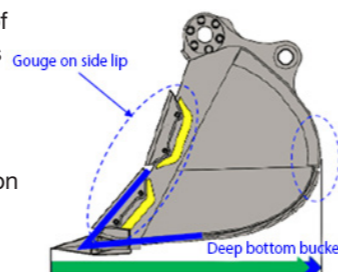


Bucket capacity

3.50 m³ & 3.70 m³

New bucket design

By optimizing the shape of the side edge, it increases the penetration force and reduces the penetration resistance. New bucket profile increases production and optimises fuel consumption and wear reduction.

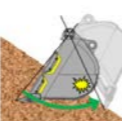
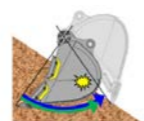


New Design Bucket



Conventional Bucket

Increased penetrability by sharpening tip angle of the bucket



Low excavation resistance due to modified profile of the bucket

Powerful digging operation

Digging in P mode has become powerful by improving hydraulic control. When more power is needed, the engine output is powered up by the one-touch power max. function and you can dig stronger. Increasing engine power achieves high performance.

Engine horsepower

Compared to PC450LC-8

4% up (360 HP ← 345 HP)

One-touch power max. function

Digging force increases for 8.5 seconds of operation when left knob switch called one-touch power max switch is continuously pressed. You can normally use E mode to reduce fuel consumption. Use this function only when needing extreme digging power temporarily, even more than P mode.



One-touch power max. switch

Maximum bucket digging force (ISO 6015)

9% up (304 kN ← 278 kN)
(With power max. function)

Measured with power max. function, 2400 mm arm and ISO 6015

Compared to PC450LC-8



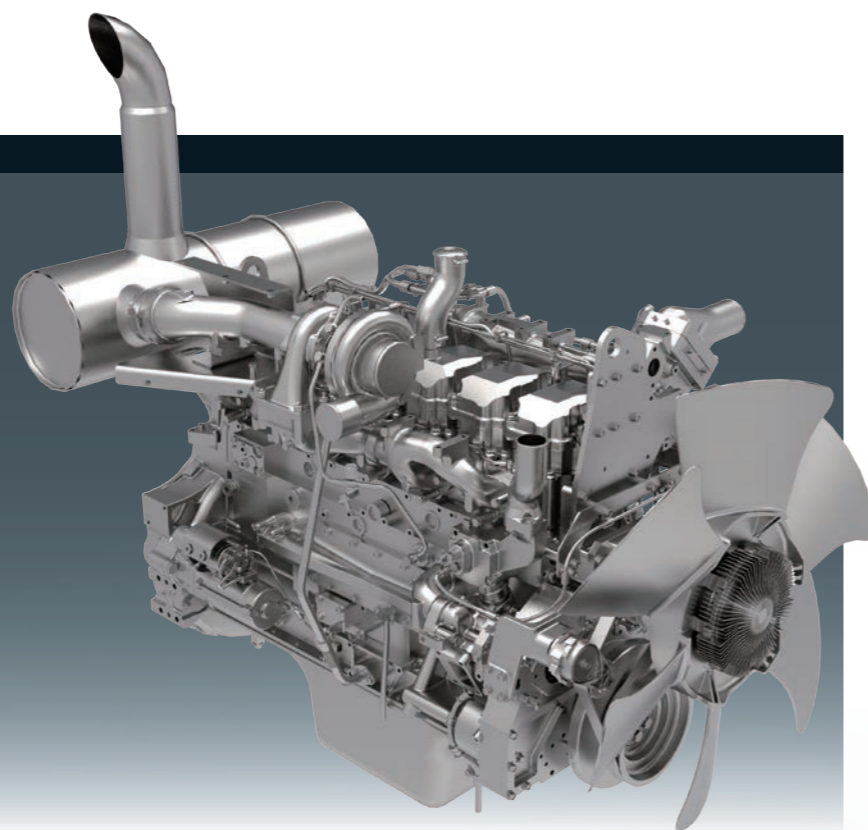
LOWER FUEL CONSUMPTION

PC500LC-10R

KOMATSU NEW ENGINE TECHNOLOGIES

Low Fuel Consumption Technology

Engine management is enhanced. The variable speed matching of the engine, hydraulic pump and a viscous fan clutch guarantee efficiency and precision. Through the in-house development and production of main components, Komatsu has achieved great advancements in technology, providing high levels of performance and efficiency in wide range of applications.

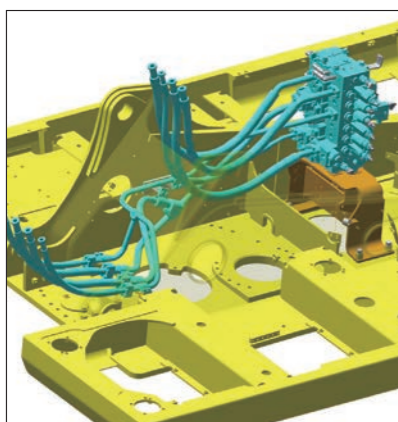


Improvement of engine combustion efficiency

By optimizing the fuel injection control, the engine combustion efficiency has improved. This technology has achieved both high power output and low fuel consumption.

Reduction of hydraulic pressure loss

The internal shape of the control valves, piping diameter and fitting shape have been thoroughly revised. With this improvement, hydraulic loss is reduced and contributes to low fuel consumption.



Reduced fan speed and fan drive loss

A speed controlled viscous fan clutch and large diameter fan improves engine efficiency and reduces engine power requirements when operating in cooler temperatures.



Enhanced engine-pump matching control

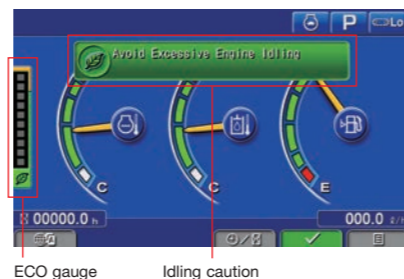
Large displacement hydraulic main pumps provide high flow output at low engine RPM. Further, by building in optimum matching of the engine and pump, it keeps high operability and workability. This technology achieves high production and low fuel consumption.

Assists Energy-saving Operations

ECO gauge

Equipped with the ECO gauge that can be recognized at a glance on

the multi-function color monitor for environment-friendly energy-saving operations. Allows focus on operation in the green range with reduced CO₂ emissions and Improved fuel efficiency.



Idling caution

To prevent unnecessary fuel consumption, an idling caution is displayed on the monitor, if the engine idles for 5 minutes or more.

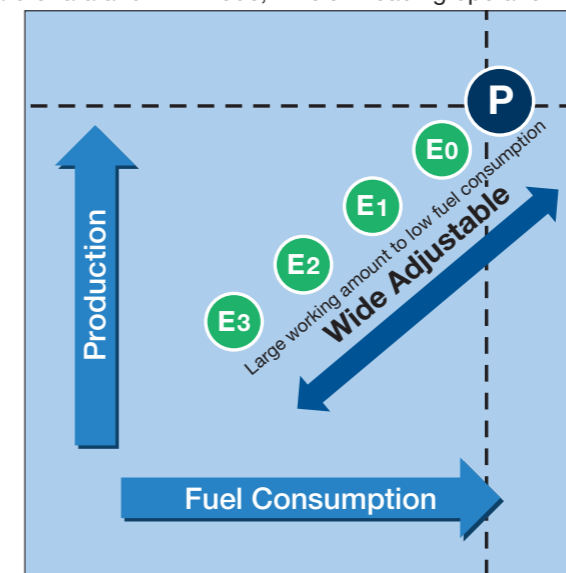
Auto idle stop function

When the engine has been idling for certain time, the engine stops automatically to reduce unnecessary fuel consumption and exhaust emissions. The duration before the engine shutdown can be easily programmed.

Fuel Saving Support Functions

Select a working mode that suits your purpose

In P mode, Handling Hard strata and in E mode, Efficient loading operation are implemented. E mode can be adjusted widely from E0 to E3 mode, and it adapts flexibly to customer's demands. Komatsu tuned each work mode precisely, ensuring high operability and workability. Just by selecting the work mode, it provides the best performance in demanding applications.



P (Power mode):

Handling hard strata
Fast cycle time

E (Economy mode):

Efficient loading operation



Easy selectable E mode

Compared with the earlier model, E0 to E3 can be easily selected on the monitor.

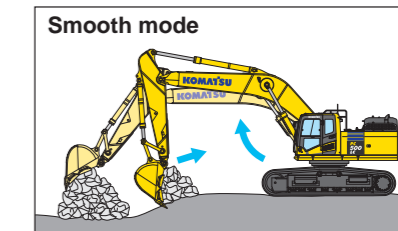


In addition to the above modes there are also the following modes. Please select the appropriate mode according to the application.

Working Mode	Application	Advantages
L	Lifting mode	<ul style="list-style-type: none"> Suitable attachment speed Lifting capacity is increased 7% by raising hydraulic pressure.
B	Breaker mode	<ul style="list-style-type: none"> Optimum engine rpm, hydraulic flow
ATT/P	Attachment Power mode	<ul style="list-style-type: none"> Optimum engine rpm, hydraulic flow, 2way Power mode
ATT/E	Attachment Economy mode	<ul style="list-style-type: none"> Optimum engine rpm, hydraulic flow, 2way Economy mode

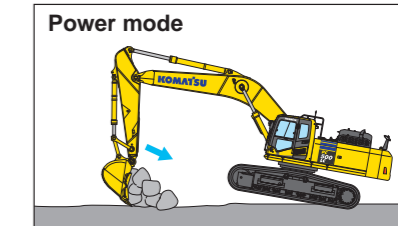
Two-mode Setting for Boom

Smooth mode provides easy operation for gathering blasted rock or scraping down operation. When maximum digging force is needed, switch to Power mode for more effective excavating.



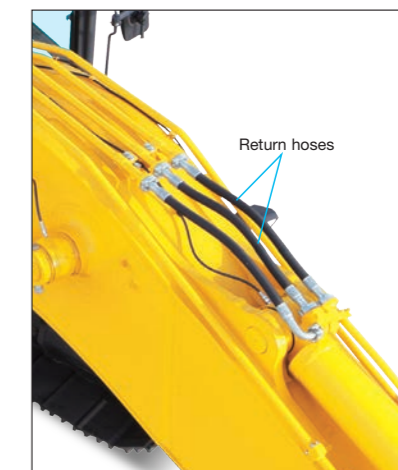
Boom floats upward, reducing lifting of machine front. This facilitates gathering blasted rock and scraping down operations.

Boom pushing force is increased, ditch digging and box digging operation on hard ground are improved.



Smooth Loading Operation

Two return hoses improve hydraulic performance. In the arm out function, a portion of the oil is returned directly to the tank providing smooth operation.

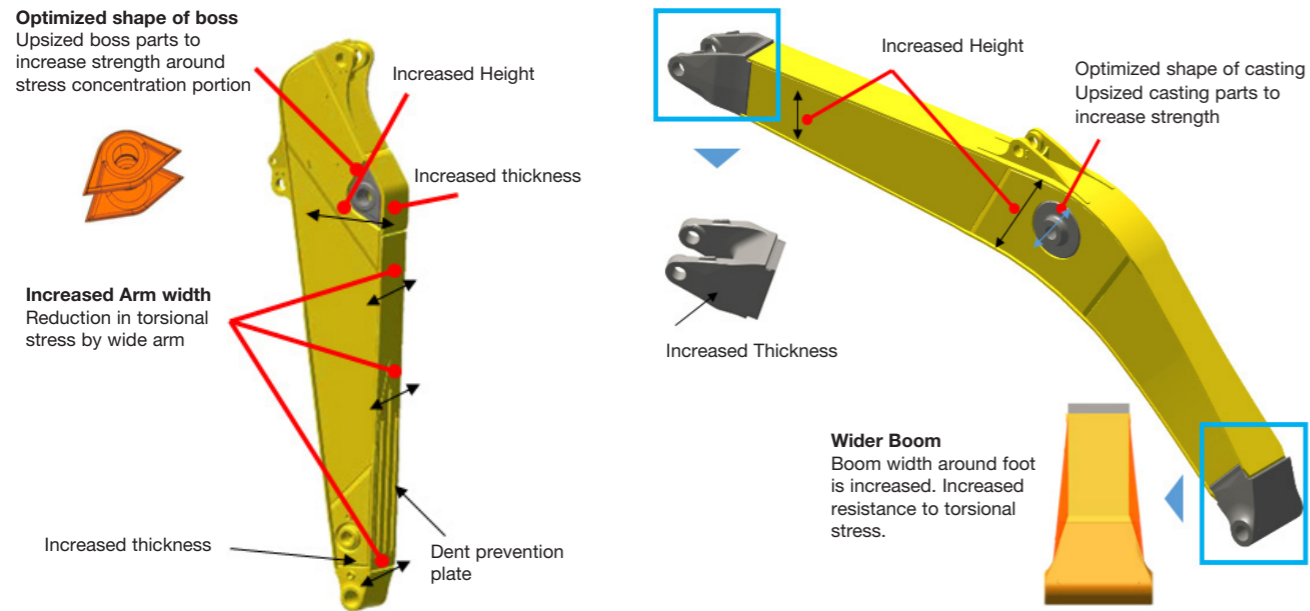


DURABILITY & RELIABILITY

High Strength Work Equipment & Frames to work with large size bucket. It has Durability to Withstand Demanding Conditions in wide range of mining Sites.

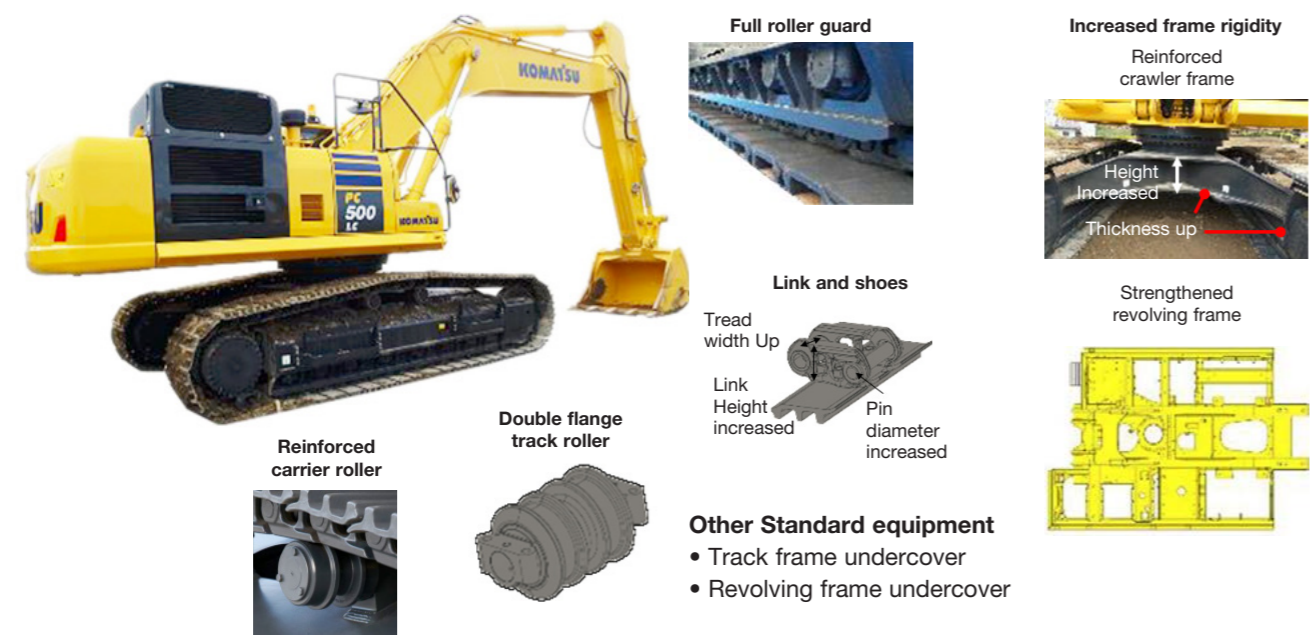
New reinforced work equipment with excellent durability and reliability

Komatsu has remodeled stronger reinforced work equipment to adapt larger size bucket. It is much suitable for working in severe conditions. The newly designed working equipment achieves high durability and reliability with high performance.



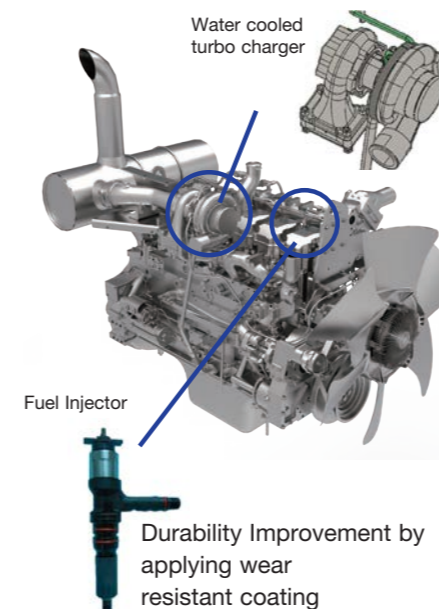
Heavy duty undercarriage

PC500LC-10R comes with newly designed larger undercarriage as standard. Durability and reliability are significantly improved by reinforcing and increasing the size of all components.



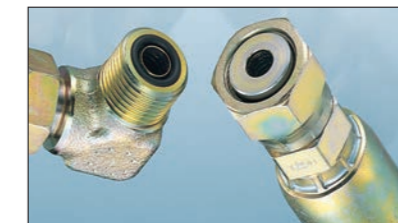
Improved Engine Reliability

Reliability of engine is improved by new water cooled turbo and new fuel injectors.



O-ring Face Seal

The hydraulic hose seal method has been changed from a conventional taper seal to an O-ring seal. This provides improved sealing performance.



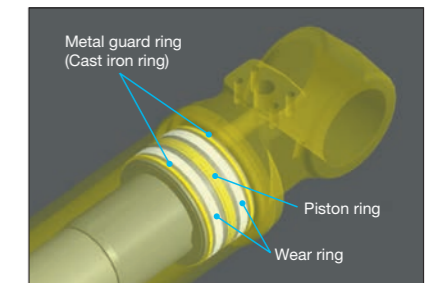
Fuel Pre-filter with water separator

Removes water and contaminants from fuel to enhance the fuel system reliability.



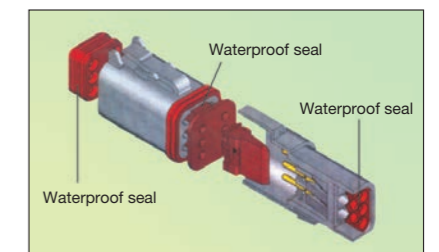
Metal Guard Rings

Metal guard rings protect all the hydraulic cylinders and improve reliability.



Shield Connectors

Shield connectors provide tight sealing and have higher reliability.



EASY SERVICEABILITY

PC500LC-10R



Maintenance is a key element of operating cost. Komatsu focused on reducing maintenance time & cost.

Centralized filters

All filter cartridges are located in pump compartment where they are easily accessible and reduce time of periodical maintenance.



Easy cleaning of cooling unit

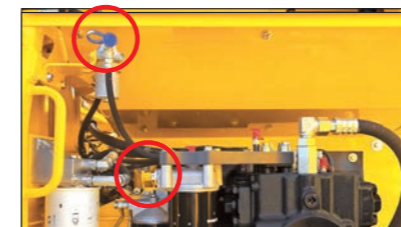
Cleanability of the cooling unit has been improved. It is effective on dusty sites.

- Improvement in core cleanability by enabling openable engine hood side cover
- Single piece Oil cooler, no more space for dust accumulation



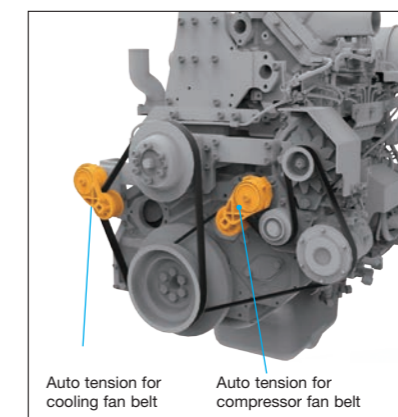
Easy oil sampling

Easy oil sampling ports are added. It helps to get oil samples that are agitated properly & helps in accurate analysis.



Auto tension fan belt

Belt tension for cooling fan & compressor and alternator are adjusted automatically.



Auto tension for cooling fan belt Auto tension for compressor fan belt

Easy maintenance time management

The monitor informs replacement time of oil and filters on the LCD when the replacement interval is reached.

Maintenance	Interval	Remain
Fuel Prefilter Change	500 h	410 h
Engine Oil Change	500 h	410 h
Engine Oil Filter Change	500 h	410 h
Hyd Oil Tank Breather Change	1000 h	910 h
Fuel Main Filter Change	1000 h	910 h

Easy to know maintenance time when using breaker

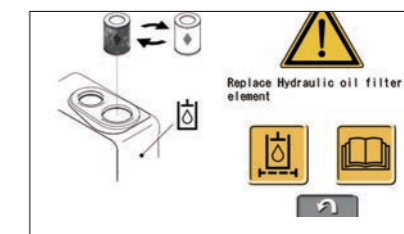
In addition to the above functions, it monitors the breaker usage time. Since the replacement time will be changed depending on the breaker usage time, monitor can notify the optimum replacement time.

Maintenance	Interval	Remain
Additional Hyd Oil Filter Change	—	—
Hyd Oil Pilot Filter Change	—	—
Additional Fuel Filter Change	—	—
Fuel Tank Breather Change	—	—
Fuel Prefilter Change	500 h	410 h

Detect abnormality of hydraulic circuit

Clogging sensor for hydraulic oil as standard

When the hydraulic oil filter is clogged, the caution message pops up on the monitor to notify filter replacement. It helps to take preventive measures to avoid breakdown & repair cost.



Clogging hydraulic oil filter caution

Battery disconnect switch

A battery disconnect switch allows a technician to disconnect the power supply and lock out before servicing or maintenance of the machine. It also minimize discharge of the battery during non operation for long-term. System operating lamp tells the timing of battery disconnect & prevent controller failures.



Pre-cleaner for dusty condition

Even in dusty places, by installing pre-cleaner coupled with the large air cleaner, the frequency of cleaning the air cleaner will be reduced.

Other Features

Easy to check level of hydraulic oil

Electric priming pump

Blow-by pressure detection

Clogging sensor for breaker line (Optional)

SAFETY & COMFORT

PC500LC-10R



Ensuring Operator's Comfort contributes to increased Safety and Productivity.

Wide newly-designed cab

Newly-designed wide spacious cab includes seat with reclining back-rest. The seat height and longitudinal inclination are easily adjusted using a pull-up lever. You can set the appropriate operational posture of armrest together with the console. Reclining the seat further enables you to place it into the fully flat state with the headrest attached.

New adjustable armrest without tools

The height of the armrest is quickly and easily adjusted without tools.



Pressurized cab

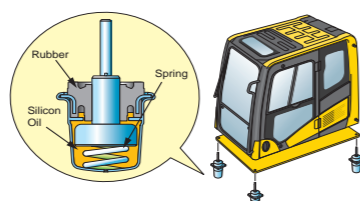
Pressurizing inside the cab to minimize the dust entering from outside. It keeps the cab clean.

Low cab noise

With substantially low noise, you can comfortably operate for long hours. Ambient noise is also reduced, reducing the stress of workers near the machine.

Low vibration with cab damper mounting

The cab damper mounting combined with high rigidity deck aids in vibration reduction at operator seat.



Suspension seat

Suspension seat with weight adjustment function as standard equipment. This seat can reduce fatigue even in operation for a long time.

Automatic A/C

It adjusts automatically to a comfortable temperature throughout the year, even in hot and cold areas.

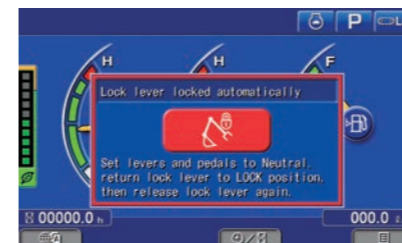
Lock lever

Locks the hydraulic pressure to prevent unintentional movement. Neutral start function allows machine to be started only in lock position.



Lock lever auto lock function

If the work equipment lever is not in the neutral position when the hydraulic lock lever is released, the equipment is automatically stopped. The auto stop state is shown on the monitor screen.

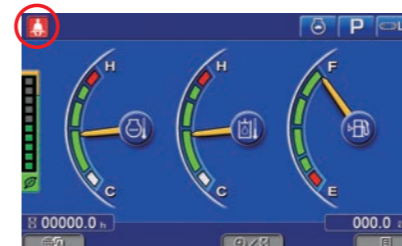


Engine shutdown secondary switch

Engine stop switch added for emergency use.



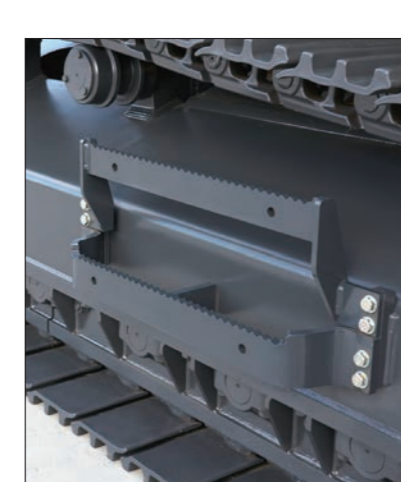
Seat belt caution indicator



Hand rails prevent accidental fall-off



Large serrated steps



OPG top guard level 2 (optional)



Cab front full height guard level 2 (optional)



Rear view monitor system (Optional)

The operator can view the rear of the machine on the monitor screen.



Rear view image on monitor

Fan guards

Fan guards are placed around fan drive.

Pump/engine room partition

Pump/engine room partition prevents oil from spraying onto the engine if a hydraulic hose fails.



Other Features AUX

- 12 V power supply
- Magazine box
- Cool & hot box
- Luggage box

ICT & KOMTRAX

PC500LC-10R

LARGE HIGH RESOLUTION LCD MONITOR

Large High-Resolution LCD Monitor
A large user-friendly high resolution LCD color monitor enables safe, accurate and smooth work. Simple and easy to operate switches.

Indicators

- 1 Auto-decelerator
- 2 Working mode
- 3 Travel speed
- 4 Engine water temperature gauge
- 5 Hydraulic oil temperature gauge
- 6 Fuel gauge
- 7 ECO gauge
- 8 Fuel consumption gauge
- 9 Function switches menu
- 10 Language select

Basic operation switches

- 1 Auto-decelerator
- 2 Working mode selector
- 3 Traveling selector
- 4 Buzzer cancel
- 5 Wiper
- 6 Window washer

Function switches

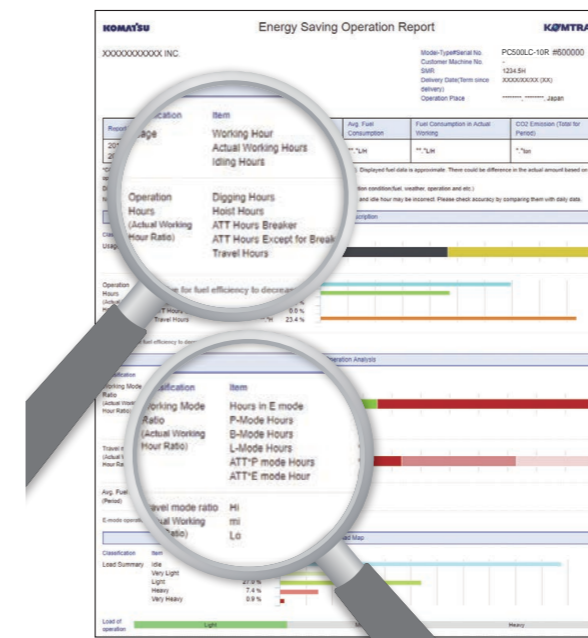
A/C operation switches

KOMTRAX

Komatsu remote monitoring and management technology provides insightful data for optimizing fleet efficiency.

Energy Saving Operation Report

KOMTRAX delivers the energy-savings operation report based on operating information such as fuel consumption, load summary and idling time, which helps you run the business efficiently.



Equipment Management Support

Through the web application, a variety of search parameters are available to quickly find information about specific machines based on key factors. Moreover, KOMTRAX finds out machines with problems from your fleet and shows you through an optimal interface.

Location

Working status

Periodic maintenance

Supports Efficient Operation

The main screen displays advices for promoting energy-saving operations as needed. The operator can use the ECO guidance menu to check the operation records, ECO guidance records, average fuel consumption logs, etc.

ECO guidance

ECO guidance menu

ECO guidance records

Operation records

Equipment Management Monitoring System

Monitor function

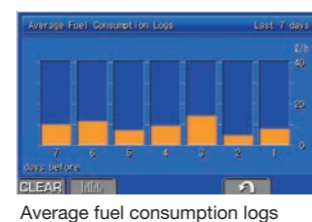
Controller monitors engine oil level, coolant temperature, battery charge air clogging, etc. If the controller finds any abnormality, it is displayed on the LCD.

Maintenance function

The monitor informs replacement time of oil and filters on the LCD when the replacement interval is reached.

Trouble data memory function

Monitor stores abnormalities for effective troubleshooting.



Optimum Strategy for Efficient Work

With the detailed information that KOMTRAX provides, you can manage your fleet conveniently on the web anytime, anywhere. It gives you the power to make informed decisions and long-term strategy.



PRODUCT SUPPORT

SPECIFICATIONS

PC500LC-10R



Komatsu Total Support

To keep your machine available and minimize operation costs, L&T CMB (Komatsu Distributor) provides total equipment support before and after procuring the machine.

Fleet recommendation

L&T CMB will study the customer jobsite and provide the most optimum fleet recommendation with detailed information to meet your application needs when you are considering to buy new machines or to replace the existing ones.

Technical support

L&T CMB offers effective services for maintenance and support of Komatsu machine.

- Preventive Maintenance (PM) clinic
- Oil & Wear analysis program
- Undercarriage inspection service
- Hose inspection

Genuine parts and lubricants

Komatsu Genuine oil is developed keeping in mind system design & requirements of the machine. Komatsu genuine parts are designed for the machine & together with Komatsu Genuine oils ensures superior performance & reliability of the machine.

Repair & maintenance service

L&T CMB offers periodical maintenance and quality repair service to the customers, utilizing and promoting Komatsu programs.

Service contract

L&T CMB offers several service package of repair and maintenance for a contracted period with optimum cost. L&T CMB's superior after sales support & service contract ensures "true peace of mind" for our Customers.

Operator training

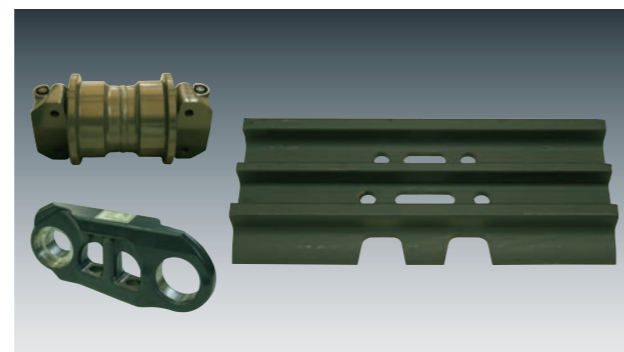
L&T CMB with strong & experienced training centres ensures best in class operator training. Skill & training of operators enables them to operate machine safely & efficiently while ensuring timely maintenance of machine.

Product support

Komatsu machines are supported by L&T CMB's strong nationwide network of dealerships, parts outlets and service centres.

Parts availability

L&T CMB with its central warehouse at Nagpur and nationwide network of dealership ensure ready availability and highest first pick rate of genuine and quality guaranteed Komatsu parts.



ENGINE

Model Komatsu SAA6D125E-5
 Type Water-cooled, 4-cycle, direct injection
 Aspiration Turbocharged, aftercooled
 Number of cylinders 6
 Bore/stroke 125 mm/150 mm
 Piston displacement 11.04 L
 Horsepower:
 SAE J1995 Gross 270 kW 362 HP
 ISO 9249 / SAE J1349 Net 269 kW 360 HP
 Rated rpm 1900 min⁻¹
 Fan drive method for radiator cooling Mechanical with viscous fan clutch
 Governor All-speed control, electronic



HYDRAULICS

Type HydraMind (Hydraulic Mechanical Intelligence New Design) system, closed-center system with load sensing valves and pressure compensated valves
 Number of selectable working modes 6
 Main pump:
 Type Variable displacement piston type
 Pumps for Boom, arm, bucket, swing, and travel circuits
 Maximum flow 690 L/min
 Supply for control circuit Self-reducing valve
 Hydraulic motors:
 Travel 2 x axial piston motors with parking brake
 Swing 1 x axial piston motor with swing holding brake
 Relief valve setting:
 Implement circuits 37.3 MPa 380 kgf/cm²
 Travel circuit 37.3 MPa 380 kgf/cm²
 Swing circuit 27.9 MPa 285 kgf/cm²
 Pilot circuit 3.2 MPa 33 kgf/cm²
 Hydraulic cylinders:
 (Number of cylinders – bore x stroke x rod diameter)
 Boom 2–170 mm x 1570 mm x 115 mm
 Arm
 Std 1–185 mm x 1985 mm x 130 mm
 SE 1–185 mm x 1800 mm x 130 mm
 Bucket
 Std 1–160 mm x 1450 mm x 115 mm
 SE 1–185 mm x 1350 mm x 130 mm



OPERATING WEIGHT (APPROXIMATE)

Operating weight including one-piece boom, arm, ISO 7451 heaped backhoe bucket, rated capacity of lubricants, coolant, full fuel tank, operator, and standard equipment.

Shoes	PC500LC-10R Std Spec. Boom: 6670 mm Arm: 2400 mm Bucket : 3.7 m ³	
	Operating Weight	Ground Pressure
600 mm	50060 kg	87.3 kPa 0.89 kgf/cm ²

Bucket Line-up

Category	Shape	Capacity (m ³)	Width (mm)		Weight* (kg)	Tooth Quantity	6.67 + 2.4 SE Spec.	6.67 + 2.9 SE Spec.
			With Side Shrouds, Side Cutters	Without Side Shrouds, Side Cutters				
GP	New shape bucket	3.70	1840	1705	2390	5	□	□
HD	New shape bucket	3.50	1910	1910	2720	5	○	×

* With side shrouds, side cutters ○: Material density up to 1.8 t/m³ □: Material density up to 1.5 t/m³ ×: Not usable



SWING SYSTEM

Drive method Hydrostatic
 Swing reduction Planetary gear
 Swing circle lubrication Grease-bathed
 Service brake Hydraulic lock
 Holding brake/Swing lock Mechanical disc brake
 Swing speed 9.1 min⁻¹



UNDERCARRIAGE

Center frame X-frame
 Track frame Box-section
 Seal of track Sealed track
 Track adjuster Hydraulic
 Number of shoes (Each side) 49
 Number of carrier rollers (Each side) 2
 Number of track rollers (Each side) 8



COOLANT AND LUBRICANT CAPACITY (REFILLING)

Fuel tank 640 L
 Coolant 45.0 L
 Engine 37.0 L
 Final drive (Each side) 9.0 L
 Swing drive 17.0 L
 Hydraulic tank 279 L



DRIVES AND BRAKES

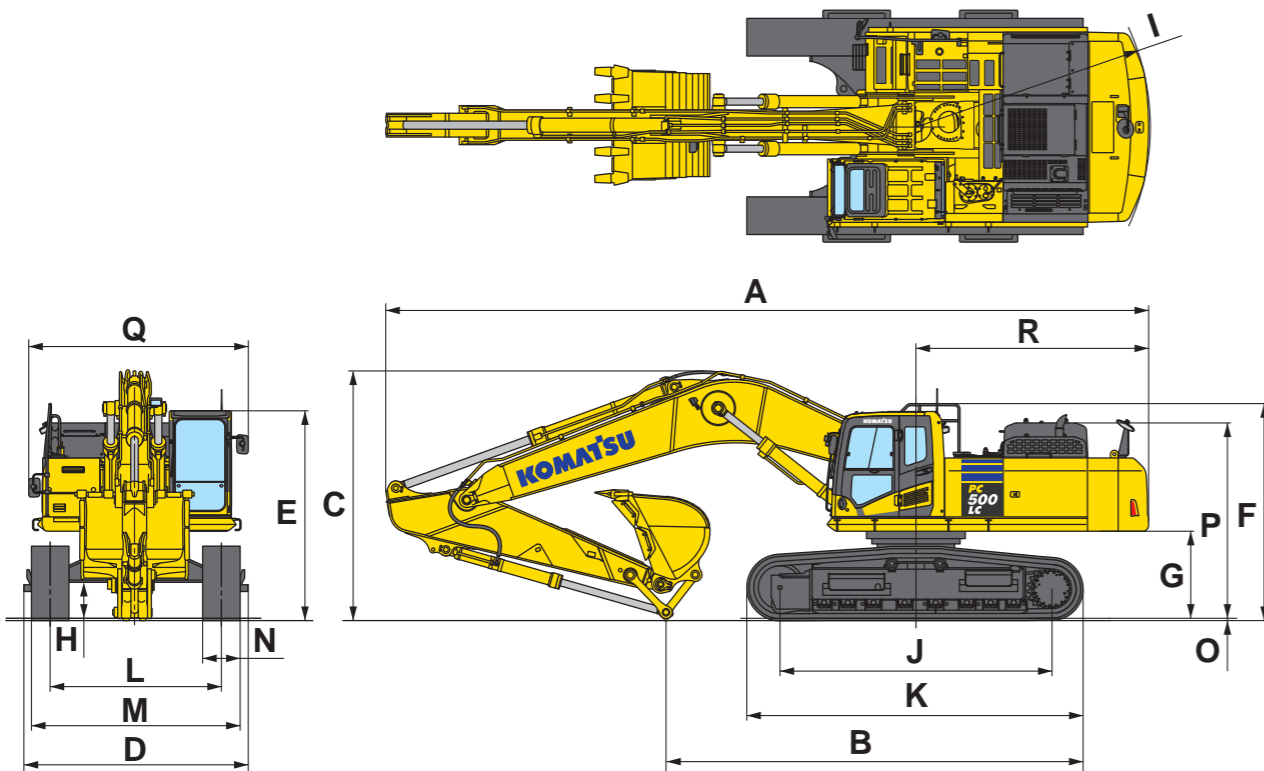
Steering control Two levers with pedals
 Drive method Hydrostatic
 Maximum drawbar pull 329 kN 33550 kg
 Gradeability 70%, 35°
 Maximum travel speed: High 5.5 km/h (Auto-shift)
 Mid 4.2 km/h (Auto-shift)
 Low 3.0 km/h (Auto-shift)
 Service brake/parking brake Hydraulic lock/mechanical disc brake



DIMENSIONS

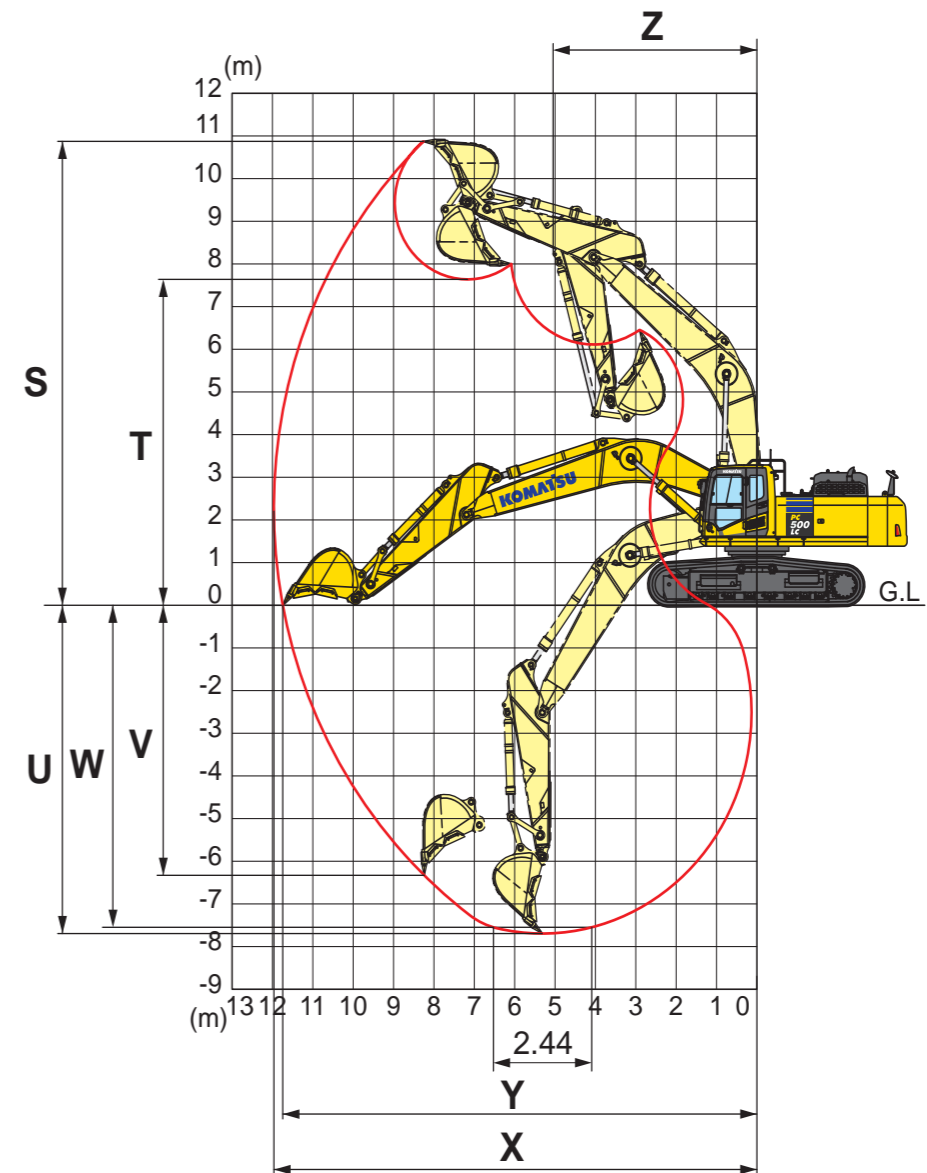
Model	PC500LC-10R SE Spec.	
Boom Length	6670 mm	6670 mm
Arm Length	2400 mm	2900 mm
A Overall length	11945 mm	11855 mm
B Length on ground (Transport)	8095 mm	7835 mm
C Overall height (To top of boom)*	3980 mm	4220 mm
D Overall width	3580 mm	
E Overall height (To top of cab)*	3360 mm	
F Overall height (To top of handrail)*	3460 mm	
G Ground clearance, counterweight	1385 mm	
H Ground clearance (Minimum)	570 mm	
I Tail swing radius	3765 mm	
J Track length on ground	4350 mm	
K Track length	5385 mm	
L Track gauge	2740 mm	
M Width of crawler	3340 mm	
N Shoe width	600 mm	
O Grouser height	37 mm	
P Machine height to top engine cover	3110 mm	
Q Machine upper width	3520 mm	
R Distance, swing center to rear end	3725 mm	

* Including grouser height



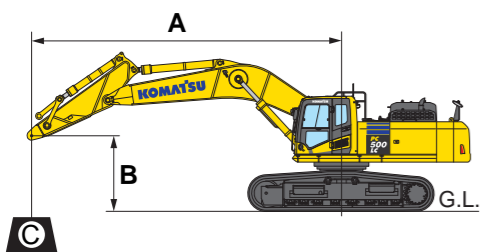
WORKING RANGE

Boom Length	6670 mm	6670 mm
Arm Length	2400 mm	2900 mm
S Max. digging height	10200 mm	10225 mm
T Max. dumping height	6675 mm	6750 mm
U Max. digging depth	6640 mm	7150 mm
V Max. vertical wall digging depth	2495 mm	2725 mm
W Max. digging depth of cut for 2440 mm level	6480 mm	7000 mm
X Max. digging reach	10945 mm	11350 mm
Y Max. digging reach at ground level	10720 mm	11135 mm
Z Min. swing radius	4720 mm	4685 mm
SAE 1179 Rating	Bucket digging force at power max.	304 kN 31000 kgf
	Arm crowd force at power max.	262 kN 26700 kgf
ISO 6015 Rating	Bucket digging force at power max.	339 kN 34600 kgf
	Arm crowd force at power max.	273 kN 27800 kgf





LIFTING CAPACITY WITH LIFTING MODE



PC500LC-10R Spec.

- A: Reach from swing center
- B: Arm top pin height
- C: Lifting capacity
- Cf: Rating over front
- Cs: Rating over side
- ⊗: Rating at maximum reach

- Conditions:
- 6670 mm one-piece boom
 - 2400 mm arm
 - Without bucket

PC500LC-10R Spec.		Arm: 2400 mm		Without bucket		Shoe: 600 mm triple grouser							
B	A	⊗ MAX		9.0 m		7.5 m		6.0 m		4.5 m		3.0 m	
		Cf	Cs	Cf	Cs	Cf	Cs	Cf	Cs	Cf	Cs	Cf	Cs
6.0 m		*14320 kg	9530 kg			*14670 kg	10620 kg	*16590 kg	15110 kg				
4.5 m		13130 kg	8380 kg			*15360 kg	10290 kg	*18400 kg	14340 kg				
3.0 m		12320 kg	7810 kg			15780 kg	9890 kg	*20200 kg	13560 kg				
1.5 m		12160 kg	7660 kg			15410 kg	9570 kg	*21190 kg	13000 kg				
0 m		12620 kg	7910 kg			15210 kg	9390 kg	*20990 kg	12750 kg				
-1.5 m		13950 kg	8680 kg			15200 kg	9380 kg	*19550 kg	12730 kg	*24530 kg	19660 kg		
-3.0 m		*13310 kg	10440 kg					*16490 kg	12960 kg	*20530 kg	20000 kg	*22950 kg	*22950 kg
-4.5 m													

PC500LC-10R Spec.		Arm: 2900 mm		Without bucket		Shoe: 600 mm triple grouser							
B	A	⊗ MAX		9.0 m		7.5 m		6.0 m		4.5 m		3.0 m	
		Cf	Cs	Cf	Cs	Cf	Cs	Cf	Cs	Cf	Cs	Cf	Cs
6.0 m		*13210 kg	8720 kg			*13810 kg	10660 kg	*15530 kg	15250 kg				
4.5 m		12130 kg	7720 kg			*14650 kg	10270 kg	*17410 kg	14430 kg	*22870 kg	22390 kg		
3.0 m		11410 kg	7210 kg	11840 kg	7470 kg	*15610 kg	9830 kg	*19380 kg	13570 kg				
1.5 m		11240 kg	7050 kg	11630 kg	7280 kg	15300 kg	9450 kg	*20690 kg	12910 kg				
0 m		11600 kg	7230 kg			15020 kg	9210 kg	*20900 kg	12550 kg	*24620 kg	19170 kg		
-1.5 m		12660 kg	7850 kg			14950 kg	9140 kg	*19910 kg	12460 kg	*25680 kg	19220 kg		
-3.0 m		*13050 kg	9220 kg			*13210 kg	9300 kg	*17480 kg	12600 kg	*22140 kg	19510 kg	*26930 kg	*26930 kg
-4.5 m		*11780 kg	*11780 kg					*12460 kg	*12460 kg	*16350 kg	*16350 kg		

* Load is limited by hydraulic capacity rather than tipping. Ratings are based on ISO standard No.10567. Rated loads do not exceed 87% of hydraulic lift capacity or 75% of tipping load.



STANDARD EQUIPMENT

ENGINE

- Air pre-cleaner
- Automatic engine warm-up system
- B20 Bio diesel Compliant
- Coolant filter
- Dry type air cleaner, double element
- Electric priming pump
- Engine, Komatsu SAA6D125E-5
- Engine overheat prevention system
- Fan clutch
- Fuel pre-filter (With water separator)
- Radiator and oil cooler dust proof net

ELECTRICAL SYSTEM

- Alternator, 24 V/60 A brushless
- Auto-decelerator
- Batteries, 2 X 12 V/140 Ah
- Battery disconnect switch with operation lamp
- Electric horn
- Starting motor, 24 V/11 kW

HYDRAULIC SYSTEM

- Arm holding valve
- Boom holding valve
- Clogging sensor for hydraulic oil return filter
- Inline filter
- Pilot filter
- Power maximizing system
- Pressure Proportional Control (PPC) hydraulic control system
- Two-mode setting for boom
- Working mode selection system

GUARDS AND COVERS

- Fan guard structure
- Heavy duty revolving frame undercover
- Revolving frame deck guard

UNDERCARRIAGE

- Hydraulic track adjusters (Each side)
- Track frame undercover
- Track roller —8 each side

OPERATOR ENVIRONMENT

- A/C with defroster
- AUX equipped with radio
- Large high resolution LCD monitor
- Lock lever
- Rear view mirrors (RH, LH, sidewise, rear)
- Seat belt, retractable
- Sun roller blind
- Suspension seat

SERVICING EQUIPMENT

- Oil sampling port (Engine & hydraulic)
- Preventive Maintenance (PM) serviceconnector

OTHER EQUIPMENT

- Blow-by sensor
- Counterweight, 10740 kg
- KOMTRAX
- Rear reflector
- Slip-resistant plates
- Travel alarm



OPTIONAL EQUIPMENT

ELECTRICAL SYSTEM

- Working lights (1 on counterweight)

HYDRAULIC SYSTEM

- Attachment piping
- Clogging sensor for breaker return filter
- Service valve

GUARDS AND COVERS

- Bolt-on top guard, OPG top guard level 2
- Cab front guard —Full height guard, OPG level 2

OPERATOR ENVIRONMENT

- Rear view monitor system
- Sun roller blind

WORK EQUIPMENT

- Arms —PC500LC-10R spec. 2900 mm arm assembly

SERVICING EQUIPMENT

- Fuel refill pump

Standard/optional equipment may change. For more details, please consult your distributor.



M E M O

A series of horizontal dashed lines for writing.

M E M O

A series of horizontal dashed lines for writing.