

KOMATSU®

WD600-3

NET HORSEPOWER
362 kW **485 HP** @ 2000 rpm

OPERATING WEIGHT
42900 kg **94,580 lb**

BLADE CAPACITY
8.0 m³ - 22.5 m³ **10.5 - 29.5 yd³**

WD
600



Photos may include optional equipment.

WHEEL DOZER

GALEO

WD600-3 Wheel Dozer Features:

WALK-AROUND

Komatsu-integrated design offers the best value, reliability, and versatility. Hydraulics, power train, frame, and all other major components are engineered by Komatsu. You get a machine whose components are designed to work together for higher production, greater reliability, and more versatility.

Large cab increases operator productivity. Operator's cab provides better visibility, increased comfort, see-at-a-glance console, two-door walk-through, and finger-touch shifting.

Special rubber-mounted cab improves operator's overall comfort and productivity. Special silicone-filled rubber cab mounts reduce vibration, noise, and operator fatigue.

Flat glass cab windows for improved visibility.

Retractable seat belt

Cylinder buffer rings reduce shock loads to the cylinder packings and prolong cylinder life by 30%.

Automatic transmission with kick-down and transmission hold switch is standard.

Ground level greasing in centralized service banks reduces and simplifies maintenance.

External mounted halogen lights

Blade tilt piping is built into the blade pusharms for maximum protection.



WD600-3

WHEEL DOZER

NET HORSEPOWER
362 kW 485 HP @ 2000 rpm

OPERATING WEIGHT
42900 kg 94,580 lb

BLADE CAPACITY
8.0 – 22.5 m³
10.5 – 29.5 yd³

It all adds up to more value and better return for your investment. It's what you should expect when you select Komatsu.

Operator's air ride seat is standard with a document holder on seat back.

New optional joystick steering system for precise control in tight conditions.

Electric power windows

Under hood mounted muffler provides operator with great rearward vision.



Easy access to engine for servicing.

Large doors lock with cab key. Easy access to all engine service points and filters.

Large Capacity rear-mounted fuel tank allows for ground level fueling.

Toolbox for grease gun and tool storage.



The new emissionized Tier 2

Komatsu SAA6D170E-3 diesel engine provides greater productivity, serviceability, and reliability. Engine oil and filter change intervals have been increased from 250 hours to 500 hours.

Low mount battery boxes for easy checking and servicing.

GALEO

Komatsu's highly productive, innovative technology, environmentally friendly machines built for the 21st century.

OPERATOR'S COMPARTMENT

Comfortable high-back bucket seat features:

- Air suspension ride fabric seat
- Six-way adjustable seat with armrests, headrest, and lumbar support to fit any size operator
- Retractable seat belt
- Rear-mounted document holder



Ask the person who runs one — they will tell you the operator's cab sets the Komatsu wheel loader apart from the others. That's a productivity feature you can't ignore. No matter how a machine specs out or how much is promised for productivity, unless the operator can work a full shift without becoming fatigued, you will never get the full measure of promised productivity.

The cab improvements on the WD600-3 go beyond providing a large cab with a comfortable air-ride seat. Improvements include these production-enhancing standard and optional features noted below:

A large flat glass windshield provides the operator an unobstructed view of the working area and attachment.

Electric power windows allow the operator to open windows without reaching or leaving the comfortable air-ride seat.

Two-door, walk-through cab. Good for ventilation as well as easy entry and exit from either side of the cab.

Silicone-filled rubber mounts dampen noise and vibration, reducing fatigue caused by noise. Helps keep the operator productive, all day.

Low-effort brake pedals actuate fully hydraulic brakes. Service brakes utilize two hydraulically-actuated independent circuits for increased safety and are adjustment-free, fully-sealed, wet disc units, preventing intrusion of dirt and dust. Since the brake system does not use air, it provides many benefits such as absence of condensation, dependable braking even in cold conditions, no need for drainage and rust free piping. Charging time after engine starting is drastically shortened and pedal effort is reduced.

Steer with ease. Komatsu's fully hydraulic steering provides fast response with low effort, even at low engine rpm.

Optional joystick/steering wheel control.

The optional joystick and steering wheel control system provides precise steering operation. The joystick steering is ideal in tight conditions, and the steering wheel is available when roading. The combination of these two systems provides a convenient, comfortable, and versatile option to fit all operators and operating conditions.

See the monitor through the steering wheel, not around it. A specially designed two-spoke steering wheel allows the operator to easily see the instrument panel.

Kick-down switch is conveniently located on the blade control. A simple motion of the thumb actuates this valuable productivity feature.

Automatic transmission. Automatic shift control gives the operator maximum control with minimum effort. The transmission hold switch allows the operator to select either automatic or manual shifting. The unique combination of the transmission hold and kick-down switches, located on the hydraulic blade control, offers the operator optimum control in all conditions.

At-a-glance instrument monitor. Monitor is mounted in front of the operator and is tilted for easy view, allowing the operator to easily check gauges and warning lights.

The **EDIMOS II (Electronic Display Monitoring System)** monitors all machine functions and systems, which are only a glance away on the side panel.

WD600-3

WHEEL DOZER



Increased Visibility and Comfort

Increased visibility and those little added touches that make work a little easier.

Keep cool, keep productive with a **five-mode air conditioner**. Thirteen strategically located vents direct cool air to the operator, maintaining productivity on even the hottest days.

There's nothing more refreshing than a cold drink on a hot day. The large **lunch box holder** will help keep your lunch and beverage cool. That's something to look forward to at lunch or break-time.

Make the time go faster with an auto-tuning **AM/FM cassette radio** with a digital clock.

Five-mode air conditioner



Lunch box holder



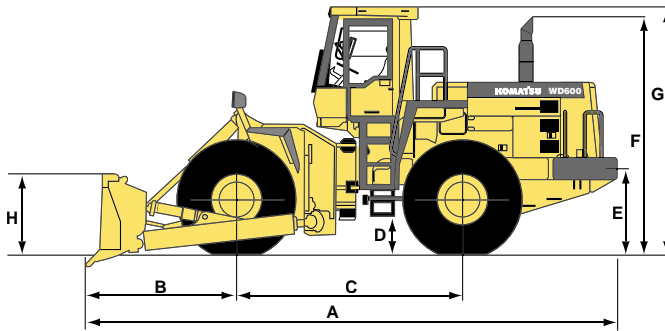
AM/FM cassette radio



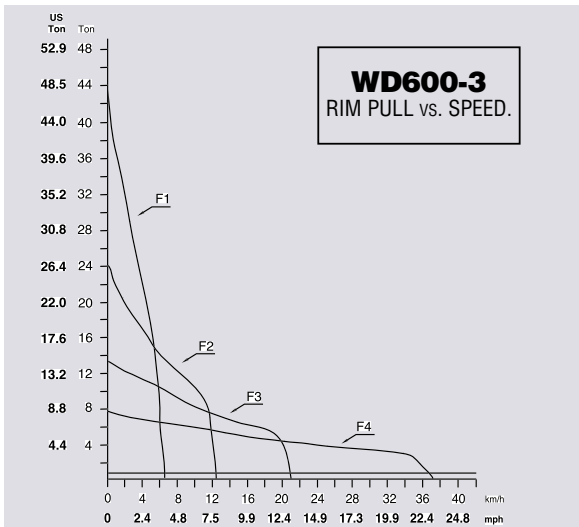
WD600-3

WHEEL DOZER

DIMENSIONS



Tires	35/65-33, 24PR (L4)	
Tread	2650 mm	8'8"
Width over tires	3570 mm	11'9"
A Overall length, blade on ground	9285 mm	30'6"
B Front overhang	2210 mm	7'3"
C Wheelbase	4100 mm	13'5"
D Ground clearance	495 mm	1'7"
E Hitch height	1295 mm	4'3"
F Overall height, top of stack	4125 mm	13'6"
G Overall height, ROPS cab	4250 mm	13'11"
H Blade height	1430 mm	4'8"



DOZER EQUIPMENT

Blade type	Straight blade	U-blade	Coal blade
Blade capacity (SAE Rated)	8.0 m ³ 10.5 yd ³	11.5 m ³ 15.0 yd ³	22.5 m ³ 29.5 yd ³
Blade width	5100 mm 16'9"	5190 mm 17'0"	5800 mm 19'0"
Maximum lift above ground	1500 mm 4'11"	1485 mm 4'10"	1530 mm 5'0"
Maximum drop below ground	450 mm 1'6"	490 mm 1'7"	490 mm 1'7"
Maximum tilt adjustment	1430 mm 4'8"	1415 mm 4'8"	1530 mm 5'0"



STANDARD EQUIPMENT

ENGINE AND RELATED ITEMS:

- Air cleaner, 2-stage dry type with auto dust evacuator
- Air intake extension
- Cooling fan, blower
- Electric cut-off
- Engine, KOMATSU SAA6D170E-3 turbocharged and air-to-air aftercooled Tier 2 emission certified, diesel
Gross HP: 389 kW **522 HP** @ 2000 rpm
Net HP: 362 kW **485 HP** @ 2000 rpm
- Starting aid, electrical intake manifold preheater
- Exhaust pipe, curved

ELECTRICAL SYSTEM:

- Alternator, 75 ampere, 24V
- Back-up alarm
- Back-up light, rear
- Batteries, 200 Ah, 2 x 12V
- Horn, electric
- Lights
 - stop and tail
 - turn signal (2 front, 2 rear) with hazard switch
 - working, halogen (2 front, high low beam with indicator, 2 rear-outside)
 - working lights in cab, halogen (2 front) inside top windshield mount
- Two starting motors, direct electric 15 kW 24 V

POWER TRAIN AND CONTROLS:

- Automatic transmission shift control
- Full floating type axle with conventional front differential
- Lock-up torque converter
- No spin rear differential

- Service brakes, hydraulic, wet-disc type, axle by axle (outboard)
- Parking brake, dry-disc type
- Transmission full powershift, F4-R4 softshift planetary type
- Transmission control, electric with kickdown shift

OPERATOR ENVIRONMENT:

- ROPS/FOPS canopy
- Cab, steel (RH and LH entrance)
 - Air conditioner, heater, defroster, and pressurizer
 - Cigarette lighter/ashtray
 - Dome light
 - Floor mat
 - Wiper/washer front and rear, front intermittent
 - Power windows
 - Rearview mirrors, inside cab mount/outside mount (LH and RH)
 - Seat, air suspension, reclining, with armrests (fabric)
 - Seat belt, 76 mm 3" retractable
 - Steering, full hydraulic power, steering wheel tiltable
 - Steering system, automatic supplemental steering
 - Sun visor

MAIN MONITOR—ELECTRONIC DISPLAY:

- Central warning lamp for check items
- Central warning lamp for caution items
- Head lamp high beam pilot
- Speedometer, MPH
- Service meter
- Transmission shift indicator
- Turn signal pilot

MAINTENANCE MONITOR—ELECTRONIC DISPLAY:

- Air cleaner check
- Battery charge
- Brake oil pressure
- Engine oil level
- Engine oil pressure
- Engine water level
- Engine water temperature
- Fuel gauge
- Parking brake warning light
- Torque converter temperature

HYDRAULICS AND CONTROLS:

- 2-spool valve for raise, lower and tilt functions with Pressure Proportional Control (PPC)
- Hydraulic oil cooler

SPECIAL ARRANGEMENTS:

- Engine water conditioner

VANDALISM PROTECTION:

- Caplock and cover for fuel tank
- Padlocks for battery boxes, brake oil tank, engine hood side panel, radiator cap cover and transmission oil filler cover

OTHER STANDARD EQUIPMENT:

- Counterweights
 - Front 1198 kg **2,642 lb**
 - Rear 410 kg **904 lb**
- Handrails, front LH and RH
- Fenders, full front, partial rear with steps
- Hitch, pin type, rear
- Lifting eyes
- Quick fuel fill, Wiggins type
- Powertrain underguard
- Rims for 35/65-33 (set of 4)
- Straight blade, 8.0 m² **10.0 yd²**



OPTIONAL EQUIPMENT

OPERATOR ENVIRONMENT:

- Auxiliary steering, ground driven with indicator
- Joystick/wheel steering control system
- AM/FM stereo radio cassette

BLADES:

- Full U-blade, 11.5 m² **15.0 yd²**
- Moldboard deduct for allied application
- Coal blade, 22.5 m² **24.5 yd²**

TIRES ONLY (TUBLESS) SET OF FOUR

- Various L4 and L5 bias tires
- Various L4 and L5 radial tires

AESS623-01

©2003 Komatsu Printed in USA

DK8(2.5M)C

8/03 (EV-1)

KOMATSU®

440 N. Fairway Drive
P.O. Box 8112
Vernon Hills, IL 60061-8112

