

# KOMATSU®

## PC210LC-8M0 Super Long Front

GROSS HORSEPOWER  
110 KW 147 HP

NET HORSEPOWER  
103 KW 138 HP

OPERATING WEIGHT  
23,350 kg

MAX HORIZONTAL REACH  
15,240 mm

**PC**  
**210**

HYDRAULIC EXCAVATOR



**PC210LC-8M0**

**ecot3**

# WALK - AROUND

The PC210LC-8M0 is a rugged, productive, designed and expressly built for Indian market, it delivers outstanding productivity, reliability and operator comforts in a robust, environmentally friendly package. Komatsu's exclusive, on-board, HydraulMind system assists in all operations, providing enhanced machine performance that's always perfectly matched to the task.

## **Special Super Long Front features**

- 15 m Super Long Front boom and arm
- Special counterweight for long reach working
- Suitable for digging work as well as slope finishing
- Maximum material density 1,8 ton/m<sup>3</sup>



## **Excellent reliability and durability**

- Heavy-duty work equipment
- Reliable major components designed and built by Komatsu
- Exceptionally reliable electronic devices

## NET HORSEPOWER

103 KW 138 HP

## OPERATING WEIGHT

23350 kg

## MAX HORIZONTAL REACH

15240 mm

**Low Vibration with Cab Damper Mounting**

PC210LC-8M0 uses viscous damper mounting for cab that incorporates longer stroke and the addition of a spring. The new cab damper mounting combined with high rigidity deck aids vibration reduction at the operator seat.

**Low-noise cab**

Operator ear noise is as low as an average passenger car.

**Large TFT monitor**

Improved operator interface through Komatsu-developed information technology. (TFT: Thin Film Transistor)

**KOMTRAX****Komatsu Tracking System**

Track and monitor your machine anytime, anywhere for total peace of mind.

**ecot3**  
ecology & economy - technology 3

The Komatsu SAA6D107E-1 engine meets EU Stage IIIA and EPA Tier III emission regulations.

**29% NOx reduction.**

# SPECIFICATIONS



## ENGINE

Model ..... Komatsu SAA6D107E-1  
 Type ..... Water-cooled, 4-cycle, direct injection  
 Aspiration ..... Turbocharged, aftercooled  
 Number of cylinders ..... 6  
 Bore ..... 107 mm  
 Stroke ..... 124 mm  
 Piston displacement ..... 6.69 L

### Horsepower:

SAEJ1995 ..... Gross 110 kW 147 HP  
 ISO 9249 / SAE J1349 ..... Net 103 kW 138 HP  
 Rated rpm ..... 2000 min-1  
 Fan drive method for radiator cooling ..... mechanical  
 Governor ..... All-speed control, electronic

EPA Tier 3 and EU Stage 3 A emissions equivalent.



## HYDRAULICS

Type ..... HydraMind (Hydraulic Mechanical Intelligence New Design) system closed-center system with load sensing valves and pressure compensated valves

Number of selectable working models.....6  
 Main pump:

Type ..... Variable displacement piston type  
 Pumps for ..... Boom, arm, bucket, swing and travel circuits  
 Maximum flow ..... 439 L / Min

Supply for control circuit ..... Self-reducing valve

### Hydraulic motors:

Travel ..... 2 x axial piston motor with parking brake  
 Swing ..... 1 x axial piston motor with holding brake

### Relief valve setting:

Implement circuits ..... 37.3 Mpa 380 kg / cm<sup>2</sup>  
 Travel Circuit ..... 37.3 Mpa 380 kg / cm<sup>2</sup>  
 Swing circuit ..... 28.9 Mpa 295 kg / cm<sup>2</sup>  
 Pilot circuit ..... 3.2 Mpa 33 kg / cm<sup>2</sup>

### Hydraulic cylinders:

(Number of cylinders - bore x stroke x rod diameter)  
 Boom ..... 2 - 120 mm x 1334 mm x 85 mm  
 Arm ..... 1 - 135 mm x 1490 mm x 95 mm  
 Bucket for 6.35m arm ..... 1-95mm x 885mm x 65mm



## DRIVES AND BRAKES

Steering control ..... Two levers with pedals  
 Drive method ..... Hydrostatic  
 Maximum drawbar pull ..... 178 kN 18200 kg  
 Gradeability ..... 70%, 35o  
 Maximum travel speed : high ..... 5.5 km / h  
 (Auto-Shift) Mid ..... 4.1 km / h  
 (Auto-Shift) Low ..... 3.0 km / h  
 Service brake ..... Hydraulic lock  
 Parking brake ..... Mechanical disc brake



## SWING SYSTEM

Drive method ..... Hydrostatic  
 Swing reduction ..... Planetary gear  
 Swing circle lubrication ..... Grease-bathed  
 Service brake ..... Hydraulic lock  
 Holding brake / Swing lock ..... Mechanical disc brake  
 Swing speed ..... 12.4 min<sup>-1</sup>



## UNDERCARRIAGE

Center frame ..... X-frame  
 Track frame ..... Box-section  
 Seal of track ..... Sealed track  
 Track adjuster ..... Hydraulic  
 Number of shoes (each side) :  
     PC210LC-8M0 ..... 49  
 Number of carrier rollers ..... 2 each side  
 Number of track rollers (each side) :  
     PC210LC-8M0 ..... 9



## COOLANT & LUBRICANT CAPACITY (REFILLING)

Fuel ..... 400 L  
 Coolant ..... 20.4 L  
 Engine ..... 23.1 L  
 Final drive, each side ..... 3.6 L  
 Swing drive ..... 6.5 L  
 Hydraulic tank ..... 135 L



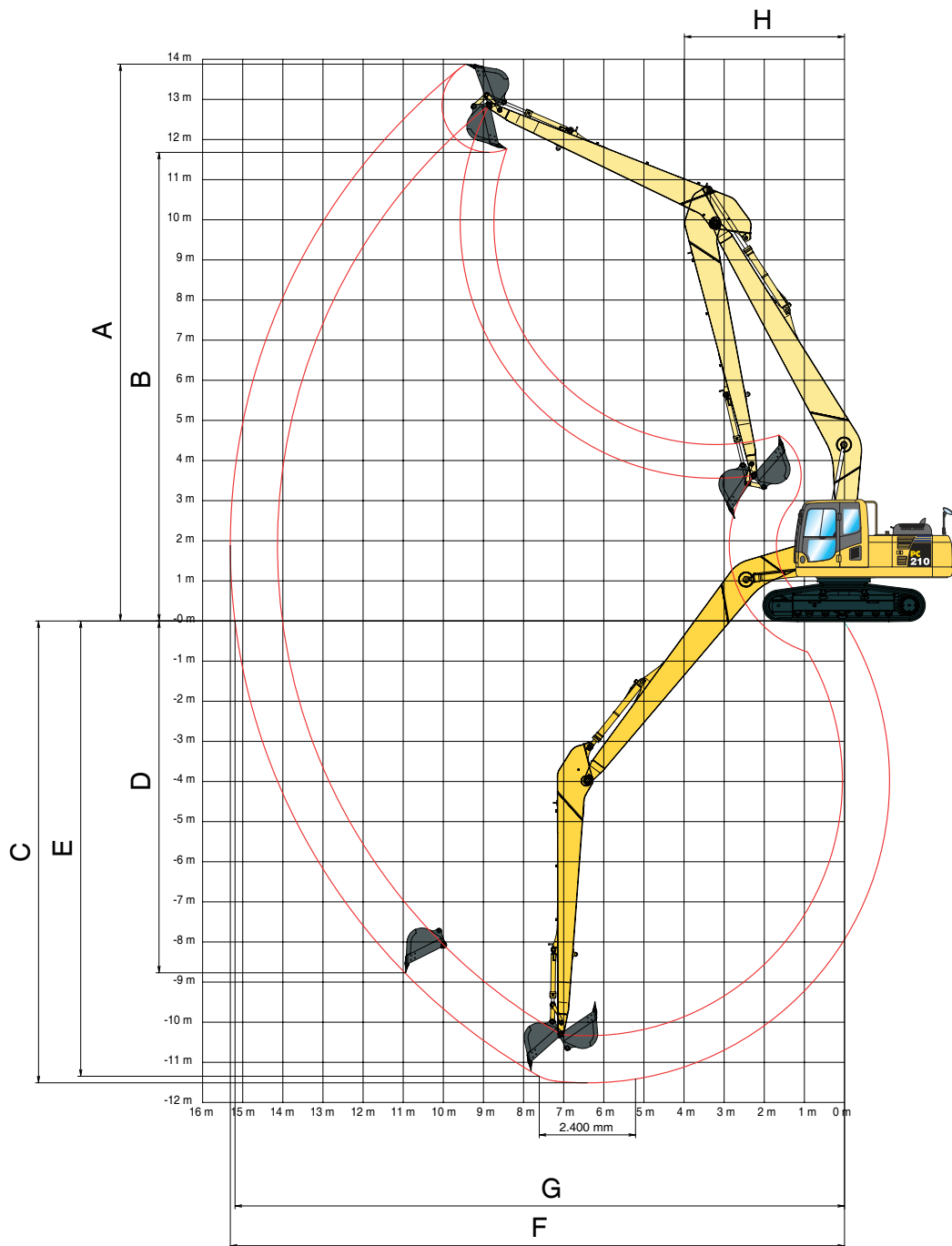
## OPERATING WEIGHT (APPROXIMATE)

### OPERATING WEIGHT (APPROXIMATE)

Operating weight, including 8.3m mono boom, 6.4m arm, 0.5m<sup>3</sup> bucket, operator, lubricant, coolant, full fuel tank and standard equipment.

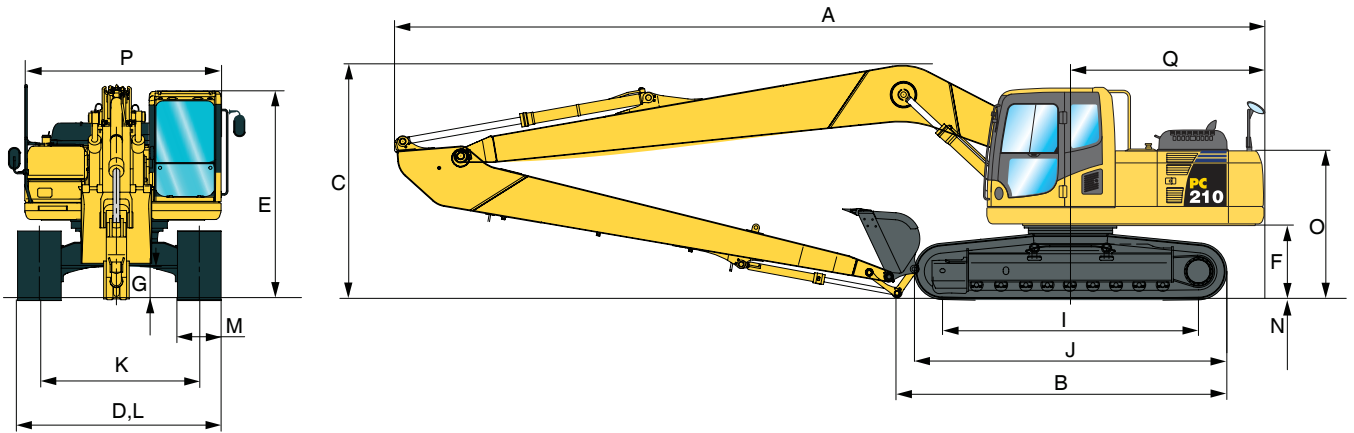
Mono Boom PC210LC-8M0		
Track Shoe (mm)	Operating Weight	Ground Pressure
600mm	23350 kg	0.49 kg/cm <sup>2</sup>

# WORKING RANGE



SUPER LONG FRONT		PC210LC-8M0
A	Max. digging height	13810 mm
B	Max. dumping height	11480 mm
C	Max. digging depth	11530 mm
D	Max. vertical wall digging depth	9510 mm
E	Max. digging depth of cut for 2,44m level	11300 mm
F	Max. digging reach	15240 mm
G	Max. digging reach at ground level	15120 mm
H	Min. swing radius	3980 mm

# TRANSPORT DIMENSIONS



MACHINE DIMENSIONS		PC210LC-8M0
A	Overall length	12,180 mm
B	Length on ground (Transport)	4,270 mm
C	Overall height (to top of boom)	3,175 mm
D	Overall width	2,980 mm
E	Overall height (to top of cab)	3,035 mm
F	Ground clearance, Counter weight	1,085 mm
G	Ground clearance (minimum)	440 mm
H	Tail Swing radius	2,945 mm
I	Track length on ground	3,655 mm
J	Track length	4,450 mm
K	Track gauge	2,380 mm
L	Width of crawler	2,980 mm
M	Shoe width	600 mm
N	Graouser height	26 mm
O	Machine cab height	2,095 mm
P	Machine Cab width	2,710 mm
Q	Distance, swing to rear end	2,905 mm

## PC210LC-8M0 15 m Super Long Front

Bucket Capacity (heaped)	Width		Weight	Number of Teeth	Arm length
SAE, PCSA	Without Side Cutters	With Side Cutters	With Side Cutters		6.35m
0.50 m <sup>3</sup> (0.65 yd <sup>3</sup> )	835 mm (32.87")	935 mm (36.81")	450 kg (992 lb)	4	○

These figures are based on operating conditions with maximum bucket load, maximum reach and ensured lateral stability.

○ : Material weight not over 1.8t/m<sup>3</sup>, 1.52 U.S. ton/yd<sup>3</sup>.



# HYDRAULIC EXCAVATOR



## STANDARD EQUIPMENT

### ENGINE

- Automatic engine warm-up system
- Dry type air cleaner, double element
- Engine, Komatsu SAA6D107E-1
- Engine overheat prevention system
- Additional filter system for poor-quality fuel (Water separator)
- Air pre-cleaner
- Large capacity fuel pre-filter
- Radiator and oil cooler dust proof net
- Suction Fan

### KOMTRAX

- Komatsu Machine tracking system

### ELECTRICAL SYSTEM

- Auto-decel
- Alternator, 24 V / 35A
- Batteries, 2 X 12 V / 88 Ah
- Starting Motor 24V / 4.5 kW
- Working Light, 3 (boom, boom cyl and RH)

### HYDRAULIC SYSTEM

- Boom holding valve
- Service valve
- Power maximizing system
- PPC hydraulic control system
- Working mode selection system

### GUARDS AND COVERS

- Fan guard structure
- Track guiding guard, center section

### UNDERCARRIAGE

- Hydraulic track adjusters (each side)
- Track roller
  - PC210LC-8M0, 9 each side
- Track shoe
  - PC210LC-8M0, 600 mm tripple grouser

### OPERATOR ENVIRONMENT

- EMMS Monitoring system
- Multi-function color monitor
- Rear view mirrors (RH, LH, rear, sidewise)
- Air Conditioner
- Radio
- Seat Suspension

### OTHER EQUIPMENT

- Counterweight (SLF)
- Electric horn
- Rear reflector
- Boom 8300 mm, Arm 6400 mm
- Slip-resistant plates
- Bucket 0.5m<sup>3</sup>



## OPTIONAL EQUIPMENT

### ELECTRICAL SYSTEM:

- Alternator, 24 V/60 A
- Batteries, large capacity

### UNDERCARRIAGE:

- Shoes, tripple grouser shoes
  - PC210LC-8M0 800mm

### OPERATOR ENVIRONMENT:

- [Operator Protective Guards level 2(OPG)]
- Cab front guard
  - Full height guard
- Seat belt, retractable
- A/C less cabin

**KOMATSU**<sup>®</sup>

Marketed &amp; Serviced by:

**L&T Construction Equipment****Larsen & Toubro Limited**1<sup>st</sup> Floor Lakshminarayan Complex, 10/1 Palace Road, Bengaluru- 560 052

Tel: (080) 22256982/83/84, 40401700 Fax: (080) 22250309

E- mail: ceb@larsentoubro.com www.larsentoubro.com

**Zonal Offices:****Delhi** (011) 4141 9555/59**Nagpur** (0712) 6606441/2260025**Kolkata** (033) 44002433/22831442**Hyderabad** (040) 23230206/67015064**Pune** (020) 66033483/480**Bengaluru** (080) 2502 0131/39